

Product Name: Net Rabbit Polyclonal Antibody
Catalog #: APRab14571



Summary

Production Name	Net Rabbit Polyclonal Antibody
Description	Rabbit Polyclonal Antibody
Host	Rabbit
Application	IF,ELISA
Reactivity	Human,Mouse

Performance

Conjugation	Unconjugated
Modification	Unmodified
Isotype	IgG
Clonality	Polyclonal
Form	Liquid
Storage	Store at 4°C short term. Aliquot and store at -20°C long term. Avoid freeze/thaw cycles.
Buffer	Liquid in PBS containing 50% glycerol, 0.5% BSA and 0.02% New type preservative N.
Purification	Affinity purification

Immunogen

Gene Name	ELK3
Alternative Names	ELK3; NET; SAP2; ETS domain-containing protein Elk-3; ETS-related protein ERP; ETS-related protein NET; Serum response factor accessory protein 2; SAP-2; SRF accessory protein 2
Gene ID	2004.0
SwissProt ID	P41970.The antiserum was produced against synthesized peptide derived from human Elk3. AA range:323-372

Application

Dilution Ratio	IF 1:200-1:1000. ELISA: 1:20000.
Molecular Weight	

Product Name: Net Rabbit Polyclonal Antibody
Catalog #: APRab14571

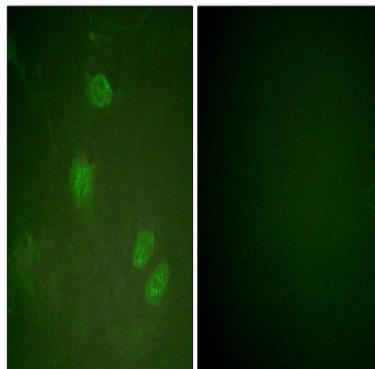


Background

This gene encodes a member of the ETS-domain transcription factor family and the ternary complex factor (TCF) subfamily. Proteins in this subfamily regulate transcription when recruited by serum response factor to bind to serum response elements. This protein is activated by signal-induced phosphorylation; studies in rodents suggest that it is a transcriptional inhibitor in the absence of Ras, but activates transcription when Ras is present. Alternate splicing results in multiple transcript variants. [provided by RefSeq, Jan 2015],function:May be a negative regulator of transcription, but can activate transcription when coexpressed with Ras, Src or Mos. Forms a ternary complex with the serum response factor and the ETS and SRF motifs of the Fos serum response element.,similarity:Belongs to the ETS family.,similarity:Contains 1 ETS DNA-binding domain.,subunit:Interacts with CTBP1.,

Research Area

Image Data



Immunofluorescence analysis of HeLa cells, using Elk3 Antibody. The picture on the right is blocked with the synthesized peptide.

Note

For research use only.