
Summary

Production Name	Nesprin-3 Rabbit Polyclonal Antibody
Description	Rabbit Polyclonal Antibody
Host	Rabbit
Application	WB,ELISA
Reactivity	Human,Mouse

Performance

Conjugation	Unconjugated
Modification	Unmodified
Isotype	IgG
Clonality	Polyclonal
Form	Liquid
Storage	Store at 4°C short term. Aliquot and store at -20°C long term. Avoid freeze/thaw cycles.
Buffer	Liquid in PBS containing 50% glycerol, 0.5% BSA and 0.02% New type preservative N.
Purification	Affinity purification

Immunogen

Gene Name	SYNE3
Alternative Names	SYNE3; C14orf49; Nesprin-3; Nuclear envelope spectrin repeat protein 3
Gene ID	161176.0
SwissProt ID	Q6ZMZ3.The antiserum was produced against synthesized peptide derived from human C14orf49. AA range:169-218

Application

Dilution Ratio	WB 1:500 - 1:2000. ELISA: 1:40000.
Molecular Weight	115kD

Background

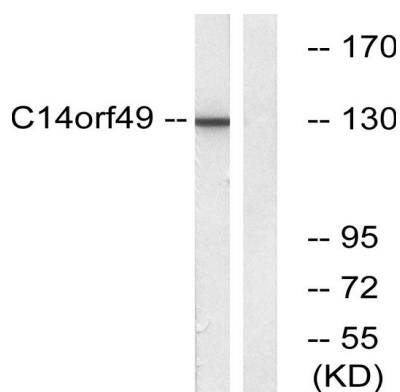
Product Name: Nesprin-3 Rabbit Polyclonal Antibody
Catalog #: APRab14569



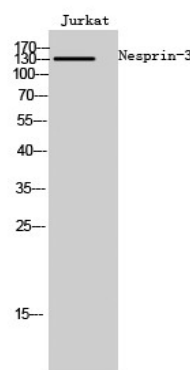
function:Involved in the maintenance of nuclear organization and structural integrity. Probable anchoring protein which theters the nucleus to the cytoskeleton by binding PLEC1/Plectin which can associate with the intermediate filament system.,similarity:Belongs to the nesprin family.,similarity:Contains 1 KASH domain.,similarity:Contains 2 spectrin repeats.,subcellular location:Located at the rough reticulum endoplasmic (RER) in some cells.,subunit:Interacts with actin-binding domain of PLEC1/plectin.,function:Involved in the maintenance of nuclear organization and structural integrity. Probable anchoring protein which theters the nucleus to the cytoskeleton by binding PLEC1/Plectin which can associate with the intermediate filament system.,similarity:Belongs to the nesprin family.,similarity:Contains 1 KASH domain.,similarity:Contains 2 spectrin repeats.,subcellular location:Located at the rough reticulum endoplasmic (RER) in some cells.,subunit:Interacts with actin-binding domain of PLEC1/plectin.,

Research Area

Image Data



Western blot analysis of lysates from Jurkat cells, using C14orf49 Antibody. The lane on the right is blocked with the synthesized peptide.



Western Blot analysis of Jurkat cells using Nesprin-3 Polyclonal Antibody cells nucleus extracted by Minute TM Cytoplasmic and Nuclear Fractionation kit (SC-003, Inventbiotech, MN, USA) .

Product Name: Nesprin-3 Rabbit Polyclonal Antibody
Catalog #: APRab14569



Note

For research use only.