

Summary

Production Name	Nek5 Rabbit Polyclonal Antibody
Description	Rabbit Polyclonal Antibody
Host	Rabbit
Application	WB,ELISA
Reactivity	Human,Mouse

Performance

Conjugation	Unconjugated
Modification	Unmodified
Isotype	IgG
Clonality	Polyclonal
Form	Liquid
Storage	Store at 4°C short term. Aliquot and store at -20°C long term. Avoid freeze/thaw cycles.
Buffer	Liquid in PBS containing 50% glycerol, 0.5% BSA and 0.02% New type preservative N.
Purification	Affinity purification

Immunogen

Gene Name	NEK5
Alternative Names	NEK5; Serine/threonine-protein kinase Nek5; Never in mitosis A-related kinase 5; NimA-related protein kinase 5
Gene ID	341676.0
SwissProt ID	Q6P3R8.The antiserum was produced against synthesized peptide derived from human NEK5. AA range:160-209

Application

Dilution Ratio	WB 1:500 - 1:2000. ELISA: 1:5000.
Molecular Weight	

Product Name: Nek5 Rabbit Polyclonal Antibody
Catalog #: APRab14554

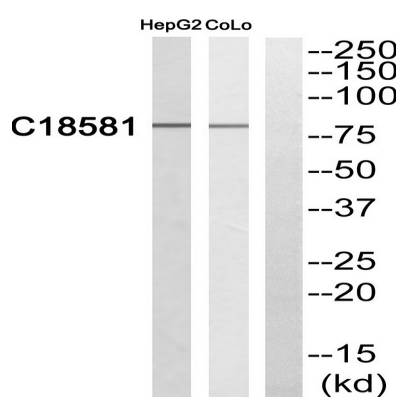


Background

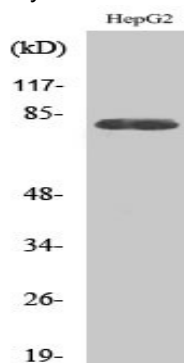
catalytic activity:ATP + a protein = ADP + a phosphoprotein.,cofactor:Magnesium.,similarity:Belongs to the protein kinase superfamily. NEK Ser/Thr protein kinase family. NIMA subfamily.,similarity:Contains 1 protein kinase domain.,catalytic activity:ATP + a protein = ADP + a phosphoprotein.,cofactor:Magnesium.,similarity:Belongs to the protein kinase superfamily. NEK Ser/Thr protein kinase family. NIMA subfamily.,similarity:Contains 1 protein kinase domain.,

Research Area

Image Data



Western blot analysis of various cells using Nek5 Polyclonal Antibody



Note

For research use only.