

Summary

Production Name	Nectin 3 Rabbit Polyclonal Antibody
Description	Rabbit Polyclonal Antibody
Host	Rabbit
Application	WB,ELISA
Reactivity	Human,Mouse,Rat

Performance

Conjugation	Unconjugated
Modification	Unmodified
Isotype	IgG
Clonality	Polyclonal
Form	Liquid
Storage	Store at 4°C short term. Aliquot and store at -20°C long term. Avoid freeze/thaw cycles.
Buffer	Liquid in PBS containing 50% glycerol, 0.5% BSA and 0.02% New type preservative N.
Purification	Affinity purification

Immunogen

Gene Name	PVRL3
Alternative Names	PVRL3; PRR3; Poliovirus receptor-related protein 3; CDw113; Nectin-3; CD113
Gene ID	25945.0
SwissProt ID	Q9NQS3.The antiserum was produced against synthesized peptide derived from the Internal region of human PVRL3. AA range:311-360

Application

Dilution Ratio	WB 1:500 - 1:2000. ELISA: 1:20000
Molecular Weight	60kD

Background

Product Name: Nectin 3 Rabbit Polyclonal Antibody
Catalog #: APRab14533

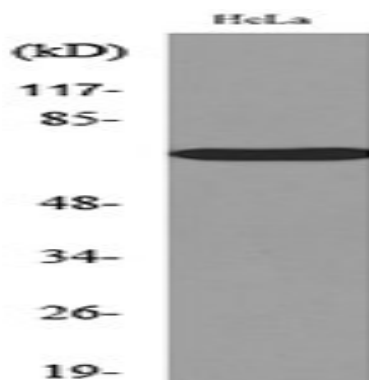


This gene encodes a member of the nectin family of proteins, which function as adhesion molecules at adherens junctions. This family member interacts with other nectin-like proteins and with afadin, a filamentous actin-binding protein involved in the regulation of directional motility, cell proliferation and survival. This gene plays a role in ocular development involving the ciliary body. Mutations in this gene are believed to result in congenital ocular defects. Alternative splicing results in multiple transcript variants. [provided by RefSeq, Aug 2011],function:Plays a role in cell-cell adhesion through heterophilic trans-interactions with nectin-like proteins or nectins, such as trans-interaction with PVRL2/nectin-2 at Sertoli-spermatid junctions. Trans-interaction with PVR induces activation of CDC42 and RAC small G proteins through common signaling molecules such as SRC and RAP1. Also involved in the formation of cell-cell junctions, including adherens junctions and synapses. Induces endocytosis-mediated down-regulation of PVR from the cell surface, resulting in reduction of cell movement and proliferation. Plays a role in the morphology of the ciliary body.,similarity:Belongs to the nectin family.,similarity:Contains 1 Ig-like V-type (immunoglobulin-like) domain.,similarity:Contains 2 Ig-like C2-type (immunoglobulin-like) domains.,subunit:Cis- and trans-homodimer. Can form trans-heterodimers with PVRL1/nectin-1, PVRL2/nectin-2, PVR, IGSF4B/Necl-1 and with IGSF4. Interacts with MLLT4/afadin. Binds with low affinity to TIGIT.,tissue specificity:Predominantly expressed in testis and placenta as well as in many cell lines, including epithelial cell lines.,

Research Area

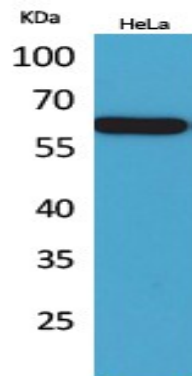
Cell adhesion molecules (CAMs);Adherens_Junction;

Image Data



Western blot analysis of lysate from HeLa cells, using PVRL3 Antibody.

Product Name: Nectin 3 Rabbit Polyclonal Antibody
Catalog #: APRab14533



Western Blot analysis of HeLa cells using Nectin 3 Polyclonal Antibody.. Secondary antibody was diluted at 1:20000

Note

For research use only.