

Summary

Production Name	NDUFC1 Rabbit Polyclonal Antibody
Description	Rabbit Polyclonal Antibody
Host	Rabbit
Application	IHC,ELISA
Reactivity	Human,Mouse

Performance

Conjugation	Unconjugated
Modification	Unmodified
Isotype	IgG
Clonality	Polyclonal
Form	Liquid
Storage	Store at 4°C short term. Aliquot and store at -20°C long term. Avoid freeze/thaw cycles.
Buffer	Liquid in PBS containing 50% glycerol, 0.5% BSA and 0.02% New type preservative N.
Purification	Affinity purification

Immunogen

Gene Name	NDUFC1
Alternative Names	NDUFC1; NADH dehydrogenase [ubiquinone] 1 subunit C1; mitochondrial; Complex I-KFYI; CI-KFYI; NADH-ubiquinone oxidoreductase KFYI subunit
Gene ID	4717.0
SwissProt ID	O43677.Synthesized peptide derived from NDUFC1 . at AA range: 40-120

Application

Dilution Ratio	IHC 1:100-1:300 ELISA: 1:10000
Molecular Weight	

Background

The encoded protein is a subunit of the NADH:ubiquinone oxidoreductase (complex I), the first enzyme complex in the

Product Name: NDUFC1 Rabbit Polyclonal Antibody
Catalog #: APRab14509

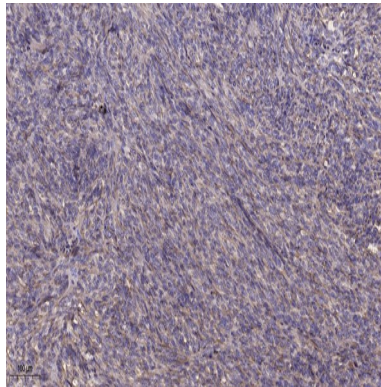


electron transport chain located in the inner mitochondrial membrane. Alternative splicing results in multiple transcript variants. [provided by RefSeq, May 2010],function:Accessory subunit of the mitochondrial membrane respiratory chain NADH dehydrogenase (Complex I), that is believed to be not involved in catalysis. Complex I functions in the transfer of electrons from NADH to the respiratory chain. The immediate electron acceptor for the enzyme is believed to be ubiquinone.,similarity:Belongs to the complex I NDUFC1 subunit family.,subunit:Complex I is composed of 45 different subunits.,

Research Area

Oxidative phosphorylation;Alzheimer's disease;Parkinson's disease;Huntington's disease;

Image Data



Immunohistochemical analysis of paraffin-embedded human Colon cancer. 1, Antibody was diluted at 1:200 (4° overnight) .
2, Tris-EDTA,pH9.0 was used for antigen retrieval. 3,Secondary antibody was diluted at 1:200 (room temperature, 45min) .

Note

For research use only.