

Summary

Production Name	NDUFB10 Rabbit Polyclonal Antibody
Description	Rabbit Polyclonal Antibody
Host	Rabbit
Application	WB,IHC,ELISA
Reactivity	Human,Rat,Mouse

Performance

Conjugation	Unconjugated
Modification	Unmodified
Isotype	IgG
Clonality	Polyclonal
Form	Liquid
Storage	Store at 4°C short term. Aliquot and store at -20°C long term. Avoid freeze/thaw cycles.
Buffer	Liquid in PBS containing 50% glycerol, 0.5% BSA and 0.02% New type preservative N.
Purification	Affinity purification

Immunogen

Gene Name	NDUFB10
Alternative Names	NDUFB10; NADH dehydrogenase [ubiquinone] 1 beta subcomplex subunit 10; Complex I-PDSW; CI-PDSW; NADH-ubiquinone oxidoreductase PDSW subunit
Gene ID	4716.0
SwissProt ID	O96000.The antiserum was produced against synthesized peptide derived from human NDUFB10. AA range:63-112

Application

Dilution Ratio	WB 1:500 - 1:2000. IHC 1:100 - 1:300. ELISA: 1:40000..
Molecular Weight	24kD

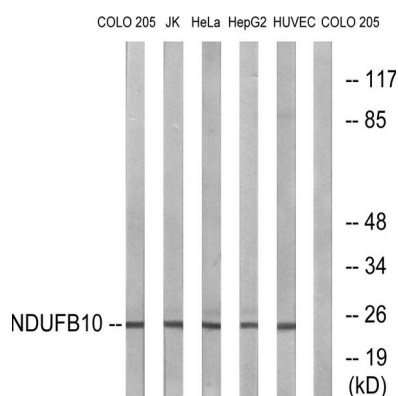
Background

function:Accessory subunit of the mitochondrial membrane respiratory chain NADH dehydrogenase (Complex I), that is believed to be not involved in catalysis. Complex I functions in the transfer of electrons from NADH to the respiratory chain. The immediate electron acceptor for the enzyme is believed to be ubiquinone.,similarity:Belongs to the complex I NDUFB10 subunit family.,subunit:Complex I is composed of 45 different subunits.,function:Accessory subunit of the mitochondrial membrane respiratory chain NADH dehydrogenase (Complex I), that is believed to be not involved in catalysis. Complex I functions in the transfer of electrons from NADH to the respiratory chain. The immediate electron acceptor for the enzyme is believed to be ubiquinone.,similarity:Belongs to the complex I NDUFB10 subunit family.,subunit:Complex I is composed of 45 different subunits.,

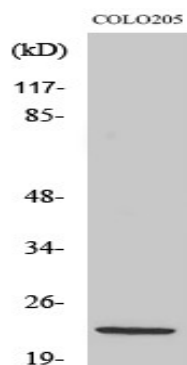
Research Area

Oxidative phosphorylation;Alzheimer's disease;Parkinson's disease;Huntington's disease;

Image Data

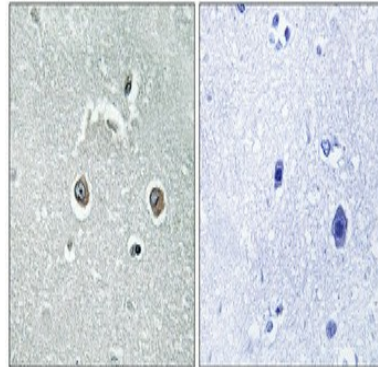


Western blot analysis of lysates from COLO, Jurkat, HeLa, HepG2, and HUVEC cells, using NDUFB10 Antibody. The lane on the right is blocked with the synthesized peptide.



Western Blot analysis of various cells using NDUFB10 Polyclonal Antibody

Product Name: NDUFB10 Rabbit Polyclonal Antibody
Catalog #: APRab14505



Immunohistochemical analysis of paraffin-embedded Human brain. Antibody was diluted at 1:100 (4°,overnight) . High-pressure and temperature Tris-EDTA,pH8.0 was used for antigen retrieval. Negative contrl (right) obtaned from antibody was pre-absorbed by immunogen peptide.

Note

For research use only.