

Summary

Production Name	NCoA-7 Rabbit Polyclonal Antibody
Description	Rabbit Polyclonal Antibody
Host	Rabbit
Application	WB,IHC,ELISA
Reactivity	Human,Rat,Mouse

Performance

Conjugation	Unconjugated
Modification	Unmodified
Isotype	IgG
Clonality	Polyclonal
Form	Liquid
Storage	Store at 4°C short term. Aliquot and store at -20°C long term. Avoid freeze/thaw cycles.
Buffer	Liquid in PBS containing 50% glycerol, 0.5% BSA and 0.02% New type preservative N.
Purification	Affinity purification

Immunogen

Gene Name	NCOA7
Alternative Names	NCOA7; ERAP140; ESNA1; Nbla00052; Nbla10993; Nuclear receptor coactivator 7; 140 kDa estrogen receptor-associated protein; Estrogen nuclear receptor coactivator 1
Gene ID	135112.0
SwissProt ID	Q8NI08.The antiserum was produced against synthesized peptide derived from human NCOA7. AA range:422-471

Application

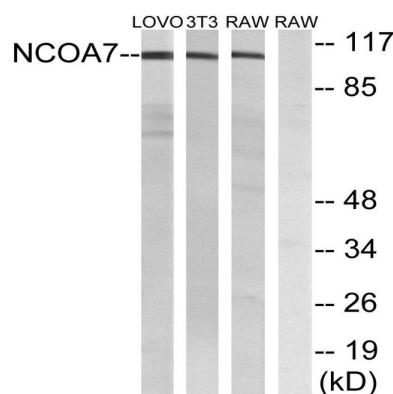
Dilution Ratio	WB 1:500 - 1:2000. IHC 1:100 - 1:300. ELISA: 1:20000..
Molecular Weight	106kD

Background

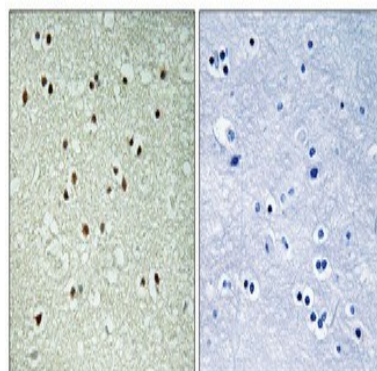
function:Enhances the transcriptional activities of several nuclear receptors. Involved in the coactivation of different nuclear receptors, such as ESR1, THRB, PPARG and RARA.,similarity:Belongs to the OXR1 family.,similarity:Contains 1 LysM repeat.,similarity:Contains 1 TLD domain.,subunit:Interacts with ESR1, ESR2A, ESR2B, THRB, PPARG and RARA in a ligand-inducible manner. Interacts with the heterodimer AHR-ARNT.,tissue specificity:Highly expressed in brain. Weakly expressed in mammary gland, ovary, uterus, prostate, stomach, bladder, spinal cord and pancreas. Expressed in cancer cell line.,function:Enhances the transcriptional activities of several nuclear receptors. Involved in the coactivation of different nuclear receptors, such as ESR1, THRB, PPARG and RARA.,similarity:Belongs to the OXR1 family.,similarity:Contains 1 LysM repeat.,similarity:Contains 1 TLD domain.,subunit:Interacts with ESR1, ESR2A, ESR2B, THRB, PPARG and RARA in a ligand-inducible manner. Interacts with the heterodimer AHR-ARNT.,tissue specificity:Highly expressed in brain. Weakly expressed in mammary gland, ovary, uterus, prostate, stomach, bladder, spinal cord and pancreas. Expressed in cancer cell line.,

Research Area

Image Data



Western blot analysis of lysates from LOVO, NIH/3T3, and RAW264.7 cells, using NCOA7 Antibody. The lane on the right is blocked with the synthesized peptide.



Immunohistochemical analysis of paraffin-embedded Human brain. Antibody was diluted at 1:100 (4°,overnight) . High-

Product Name: NCoA-7 Rabbit Polyclonal Antibody
Catalog #: APRab14456



pressure and temperature Tris-EDTA,pH8.0 was used for antigen retrieval. Negative control (right) obtained from antibody was pre-absorbed by immunogen peptide.

Note

For research use only.