
Summary

Production Name	NCKX3 Rabbit Polyclonal Antibody
Description	Rabbit Polyclonal Antibody
Host	Rabbit
Application	WB,ELISA
Reactivity	Human,Mouse,Rat

Performance

Conjugation	Unconjugated
Modification	Unmodified
Isotype	IgG
Clonality	Polyclonal
Form	Liquid
Storage	Store at 4°C short term. Aliquot and store at -20°C long term. Avoid freeze/thaw cycles.
Buffer	Liquid in PBS containing 50% glycerol, 0.5% BSA and 0.02% New type preservative N.
Purification	Affinity purification

Immunogen

Gene Name	SLC24A3
Alternative Names	SLC24A3; NCKX3; Sodium/potassium/calcium exchanger 3; Na(+)/K(+)/Ca(2+)-exchange protein 3; Solute carrier family 24 member 3
Gene ID	57419.0
SwissProt ID	Q9HC58.The antiserum was produced against synthesized peptide derived from human SLC24A3. AA range:354-403

Application

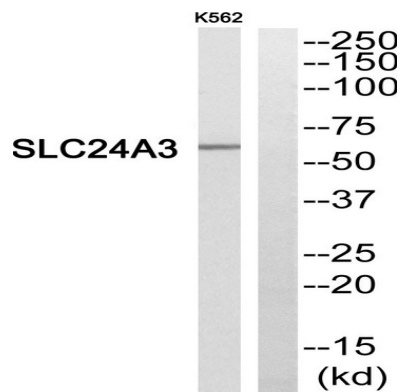
Dilution Ratio	WB 1:500 - 1:2000. ELISA: 1:20000
Molecular Weight	60kD

Background

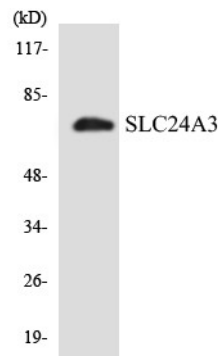
Plasma membrane sodium/calcium exchangers are an important component of intracellular calcium homeostasis and electrical conduction. Potassium-dependent sodium/calcium exchangers such as SLC24A3 are believed to transport 1 intracellular calcium and 1 potassium ion in exchange for 4 extracellular sodium ions (Kraev et al., 2001 [PubMed 11294880]).[supplied by OMIM, Mar 2008],function:Transports 1 Ca(2+) and 1 K(+) in exchange for 4 Na(+),similarity:Belongs to the sodium/potassium/calcium exchanger family. SLC24A subfamily.,tissue specificity:Abundant in the brain. Expressed at low levels in the aorta, uterus and intestine.,

Research Area

Image Data



Western blot analysis of SLC24A3 Antibody. The lane on the right is blocked with the SLC24A3 peptide.



Western blot analysis of the lysates from K562 cells using SLC24A3 antibody.

Note

For research use only.