

Summary

Production Name	Nck-2 Rabbit Polyclonal Antibody
Description	Rabbit Polyclonal Antibody
Host	Rabbit
Application	IHC,ELISA
Reactivity	Human,Mouse

Performance

Conjugation	Unconjugated
Modification	Unmodified
Isotype	IgG
Clonality	Polyclonal
Form	Liquid
Storage	Store at 4°C short term. Aliquot and store at -20°C long term. Avoid freeze/thaw cycles.
Buffer	Liquid in PBS containing 50% glycerol, 0.5% BSA and 0.02% New type preservative N.
Purification	Affinity purification

Immunogen

Gene Name	NCK2
Alternative Names	NCK2; GRB4; Cytoplasmic protein NCK2; Growth factor receptor-bound protein 4; NCK adaptor protein 2; Nck-2; SH2/SH3 adaptor protein NCK-beta
Gene ID	8440.0
SwissProt ID	O43639.The antiserum was produced against synthesized peptide derived from human NCK2. AA range:331-380

Application

Dilution Ratio	IHC 1:100-1:300 ELISA: 1:10000
Molecular Weight	

Background

Product Name: Nck-2 Rabbit Polyclonal Antibody
Catalog #: APRab14445

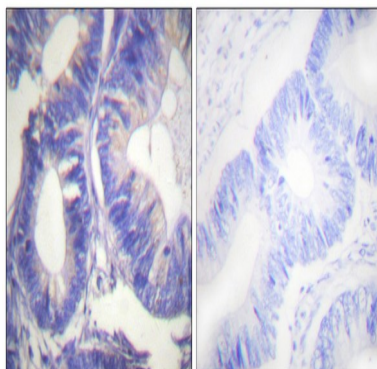


This gene encodes a member of the NCK family of adaptor proteins. The protein contains three SH3 domains and one SH2 domain. The protein has no known catalytic function but has been shown to bind and recruit various proteins involved in the regulation of receptor protein tyrosine kinases. It is through these regulatory activities that this protein is believed to be involved in cytoskeletal reorganization. Alternate transcriptional splice variants, encoding different isoforms, have been characterized. [provided by RefSeq, Jul 2008],function:Adapter protein which associates with tyrosine-phosphorylated growth factor receptors or their cellular substrates. Maintains low levels of EIF2S1 phosphorylation by promoting its dephosphorylation by PP1.,similarity:Contains 1 SH2 domain.,similarity:Contains 1 SH3 domain.,similarity:Contains 2 SH3 domains.,similarity:Contains 3 SH3 domains.,subunit:Interacts with DOCK1, PINCH and TGFB111. Part of a complex containing PPP1R15B, PP1 and NCK2.,tissue specificity:Ubiquitous.,

Research Area

ErbB_HER;Axon guidance;T_Cell_Receptor;Pathogenic Escherichia coli infection;

Image Data



Immunohistochemistry analysis of paraffin-embedded human colon carcinoma tissue, using NCK2 Antibody. The picture on the right is blocked with the synthesized peptide.

Note

For research use only.