
Summary

Production Name	NBPF7 Rabbit Polyclonal Antibody
Description	Rabbit Polyclonal Antibody
Host	Rabbit
Application	WB
Reactivity	Human,Rat,Mouse

Performance

Conjugation	Unconjugated
Modification	Unmodified
Isotype	IgG
Clonality	Polyclonal
Form	Liquid
Storage	Store at 4°C short term. Aliquot and store at -20°C long term. Avoid freeze/thaw cycles.
Buffer	Liquid in PBS containing 50% glycerol, 0.5% BSA and 0.02% New type preservative N.
Purification	Affinity purification

Immunogen

Gene Name	NBPF7
Alternative Names	NBPF7; Putative neuroblastoma breakpoint family member 7
Gene ID	343505.0
SwissProt ID	POC2Y1.The antiserum was produced against synthesized peptide derived from human NBPF7. AA range:361-410

Application

Dilution Ratio	WB 1:500-2000
Molecular Weight	48kD

Background

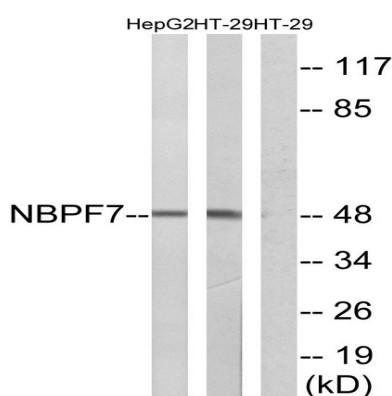
Product Name: NBPF7 Rabbit Polyclonal Antibody
Catalog #: AP Rab14429



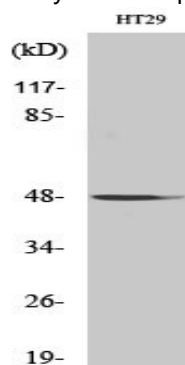
neuroblastoma breakpoint family member 7(NBPF7) Homo sapiens This gene is a member of the neuroblastoma breakpoint family (NBPF) which consists of dozens of recently duplicated genes primarily located in segmental duplications on human chromosome 1. This gene family has experienced its greatest expansion within the human lineage and has expanded, to a lesser extent, among primates in general. Members of this gene family are characterized by tandemly repeated copies of DUF1220 protein domains. Gene copy number variations in the human chromosomal region 1q21.1, where most DUF1220 domains are located, have been implicated in a number of developmental and neurogenetic diseases such as microcephaly, macrocephaly, autism, schizophrenia, mental retardation, congenital heart disease, neuroblastoma, and congenital kidney and urinary tract anomalies. Altered expression of some gene family members is associated with several types of cancer. This gene family is encoded by one of the numerous copies of NBPF genes clustered in the p36, p12 and q21 region of the chromosome 1. Similarity: Belongs to the NBPF family. Similarity: Contains 2 NBPF domains.

Research Area

Image Data



Western blot analysis of lysates from HT-29 and HepG2 cells, using NBPF7 Antibody. The lane on the right is blocked with the synthesized peptide.



Western Blot analysis of various cells using NBPF7 Polyclonal Antibody

Product Name: NBPF7 Rabbit Polyclonal Antibody
Catalog #: APRab14429



Note

For research use only.