

## Summary

<b>Production Name</b>	NARG1 Rabbit Polyclonal Antibody
<b>Description</b>	Rabbit Polyclonal Antibody
<b>Host</b>	Rabbit
<b>Application</b>	WB,ELISA
<b>Reactivity</b>	Human,Mouse

## Performance

<b>Conjugation</b>	Unconjugated
<b>Modification</b>	Unmodified
<b>Isotype</b>	IgG
<b>Clonality</b>	Polyclonal
<b>Form</b>	Liquid
<b>Storage</b>	Store at 4°C short term. Aliquot and store at -20°C long term. Avoid freeze/thaw cycles.
<b>Buffer</b>	Liquid in PBS containing 50% glycerol, 0.5% BSA and 0.02% New type preservative N.
<b>Purification</b>	Affinity purification

## Immunogen

<b>Gene Name</b>	NAA15 NAA15; GA19; NARG1; NATH; TBDN100; N-alpha-acetyltransferase 15; NatA auxiliary subunit; Gastric cancer antigen Ga19; N-terminal acetyltransferase; NMDA receptor-regulated protein 1; Protein tubedown-1; Tbdn100
<b>Alternative Names</b>	
<b>Gene ID</b>	80155.0
<b>SwissProt ID</b>	Q9BXJ9.The antiserum was produced against synthesized peptide derived from human NARG1. AA range:221-270

## Application

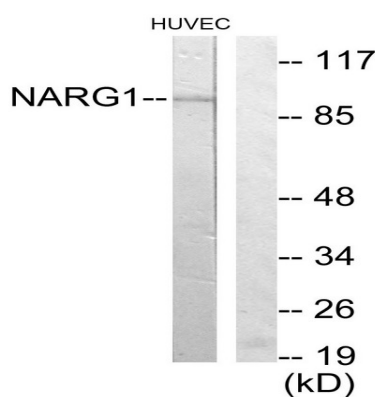
<b>Dilution Ratio</b>	WB 1:500 - 1:2000. ELISA: 1:20000
<b>Molecular Weight</b>	100kD

## Background

This gene encodes a protein of unknown function. However, similarity to proteins in yeast and other species suggests that this protein may be an N-acetyltransferase. [provided by RefSeq, Jul 2008],function:The ARD1A-NARG1 complex displays alpha (N-terminal) acetyltransferase activity that may be important for vascular, hematopoietic and neuronal growth and development. Required to control retinal neovascularization in adult ocular endothelial cells. In complex with G22P1 and XRCC5 (Ku80), up-regulates transcription from the osteocalcin promoter.,PTM:Cleaved by caspases during apoptosis, resulting in a stable 35 kDa fragment.,sequence caution:Contaminating sequence. Potential poly-A sequence.,similarity:Contains 8 TPR repeats.,subcellular location:Mainly cytoplasmic, nuclear in some cases. Present in the free cytosolic and cytoskeleton-bound polysomes, but not in the membrane-bound polysomes.,subunit:Interacts with ARD1A, G22P1, NAT13 and XRCC5.,tissue specificity:Expressed at high levels in testis and in ocular endothelial cells. Also found in brain (corpus callosum), heart, colon, bone marrow and at lower levels in most adult tissues, including thyroid, liver, pancreas, mammary and salivary glands, lung, ovary, urogenital system and upper gastrointestinal tract. Overexpressed in gastric cancer, in papillary thyroid carcinomas and in a Burkitt lymphoma cell line (Daudi). Specifically suppressed in abnormal proliferating blood vessels in eyes of patients with proliferative diabetic retinopathy.,

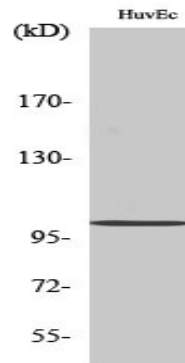
## Research Area

## Image Data



Western blot analysis of lysates from HUVEC cells, using NARG1 Antibody. The lane on the right is blocked with the synthesized peptide.

**Product Name: NARG1 Rabbit Polyclonal Antibody**  
**Catalog #: APRab14411**



Western Blot analysis of various cells using NARG1 Polyclonal Antibody

**Note**

For research use only.