

## Summary

<b>Production Name</b>	NARFL Rabbit Polyclonal Antibody
<b>Description</b>	Rabbit Polyclonal Antibody
<b>Host</b>	Rabbit
<b>Application</b>	WB,ELISA
<b>Reactivity</b>	Human,Rat,Mouse

## Performance

<b>Conjugation</b>	Unconjugated
<b>Modification</b>	Unmodified
<b>Isotype</b>	IgG
<b>Clonality</b>	Polyclonal
<b>Form</b>	Liquid
<b>Storage</b>	Store at 4°C short term. Aliquot and store at -20°C long term. Avoid freeze/thaw cycles.
<b>Buffer</b>	Liquid in PBS containing 50% glycerol, 0.5% BSA and 0.02% New type preservative N.
<b>Purification</b>	Affinity purification

## Immunogen

<b>Gene Name</b>	NARFL
<b>Alternative Names</b>	NARFL; PRN; Cytosolic Fe-S cluster assembly factor NARFL; Iron-only hydrogenase-like protein 1; IOP1; Nuclear prelamin A recognition factor-like protein; Protein related to Narf
<b>Gene ID</b>	64428.0
<b>SwissProt ID</b>	Q9H6Q4.The antiserum was produced against synthesized peptide derived from human NARFL. AA range:387-436

## Application

<b>Dilution Ratio</b>	WB 1:500 - 1:2000. ELISA: 1:40000..
<b>Molecular Weight</b>	50kD

**Product Name: NARFL Rabbit Polyclonal Antibody**  
**Catalog #: APRab14410**

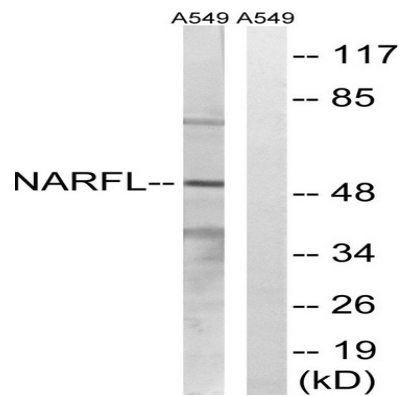


## Background

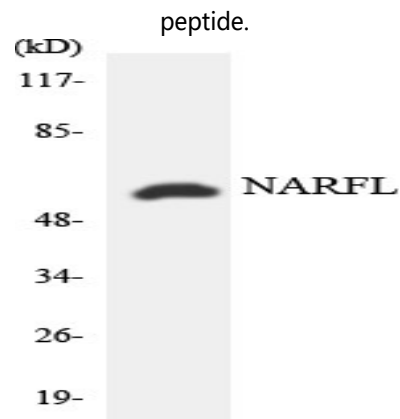
function:Regulates HIF1A expression.,similarity:Belongs to the NARF family.,tissue specificity:Widely expressed.,function:Regulates HIF1A expression.,similarity:Belongs to the NARF family.,tissue specificity:Widely expressed.,

## Research Area

## Image Data

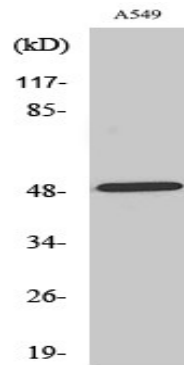


Western blot analysis of lysates from A549 cells, using NARFL Antibody. The lane on the right is blocked with the synthesized peptide.



Western blot analysis of the lysates from HeLa cells using NARFL antibody.

**Product Name: NARFL Rabbit Polyclonal Antibody**  
**Catalog #: APRab14410**



Western Blot analysis of various cells using NARFL Polyclonal Antibody cells nucleus extracted by Minute TM Cytoplasmic and Nuclear Fractionation kit (SC-003, Inventbiotech, MN, USA) .

**Note**

For research use only.