
Summary

Production Name	N33 Rabbit Polyclonal Antibody
Description	Rabbit Polyclonal Antibody
Host	Rabbit
Application	IF, WB,
Reactivity	Human, Mouse, Rat

Performance

Conjugation	Unconjugated
Modification	Unmodified
Isotype	IgG
Clonality	Polyclonal
Form	Liquid
Storage	Store at 4°C short term. Aliquot and store at -20°C long term. Avoid freeze/thaw cycles.
Buffer	Liquid in PBS containing 50% glycerol, 0.5% BSA and 0.02% New type preservative N.
Purification	Affinity purification

Immunogen

Gene Name	TUSC3
Alternative Names	TUSC3; N33; Tumor suppressor candidate 3; Magnesium uptake/transporter TUSC3; Protein N33
Gene ID	7991.0
SwissProt ID	Q13454. The antiserum was produced against synthesized peptide derived from human TUSC3. AA range: 131-180

Application

Dilution Ratio	WB 1:500 - 1:2000. IF 1:200 - 1:1000. ELISA: 1:10000. Not yet tested in other applications.
Molecular Weight	39kD

Product Name: N33 Rabbit Polyclonal Antibody
Catalog #: APRab14368



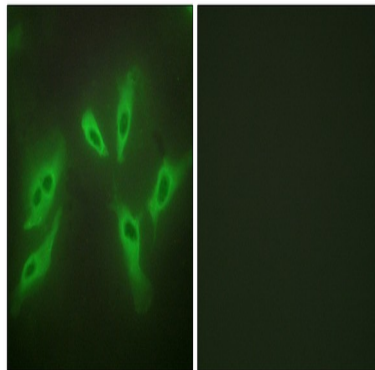
Background

This gene is a candidate tumor suppressor gene. It is located within a homozygously deleted region of a metastatic prostate cancer. The gene is expressed in most nonlymphoid human tissues including prostate, lung, liver, and colon. Expression was also detected in many epithelial tumor cell lines. Two transcript variants encoding distinct isoforms have been identified for this gene. [provided by RefSeq, Jul 2008],disease:Defects in TUSC3 are the cause of mental retardation non-syndromic autosomal recessive type 7 (MRT7) [MIM:611093]. Mental retardation is characterized by significantly sub-average general intellectual functioning associated with impairments in adaptive behavior and manifested during the developmental period. Non-syndromic mental retardation patients do not manifest other clinical signs.,function:May be involved in N-glycosylation through its association with N-oligosaccharyl transferase.,similarity:Belongs to the OST3/OST6 family.,subunit:Weakly associates with the oligosaccharyl transferase (OST) complex which contains at least RPN1/ribophorin I, RPN2/ribophorin II, OST48, DAD1, and either STT3A or STT3B.,tissue specificity:Expressed in most non-lymphoid cells and tissues examined, including prostate, lung, liver, colon, heart, kidney and pancreas.,

Research Area

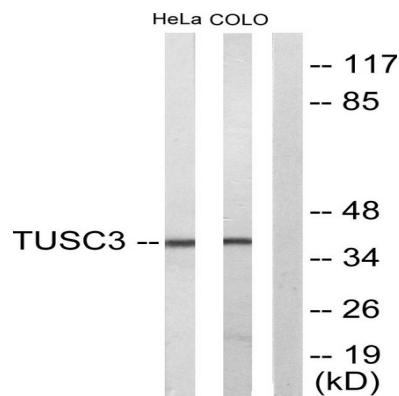
N-Glycan biosynthesis;

Image Data

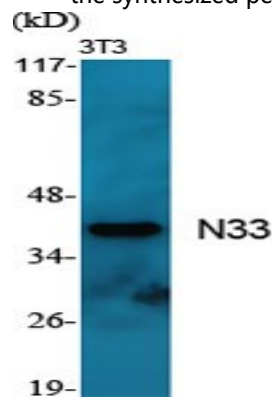


Immunofluorescence analysis of HeLa cells using TUSC3 Antibody. The picture on the right is blocked with the synthesized peptide.

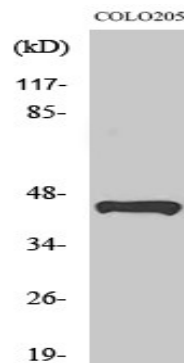
Product Name: N33 Rabbit Polyclonal Antibody
Catalog #: APRab14368



Western blot analysis of lysates from COLO205 and HeLa cells, using TUSC3 Antibody. The lane on the right is blocked with the synthesized peptide.



Western Blot analysis of various cells using N33 Polyclonal Antibody



Western Blot analysis of HeLa cells using N33 Polyclonal Antibody

Note

For research use only.