

Product Name: MZF-1 Rabbit Polyclonal Antibody
Catalog #: APRab14360



Summary

Production Name	MZF-1 Rabbit Polyclonal Antibody
Description	Rabbit Polyclonal Antibody
Host	Rabbit
Application	IHC, WB, ELISA
Reactivity	Human, Rat, Mouse

Performance

Conjugation	Unconjugated
Modification	Unmodified
Isotype	IgG
Clonality	Polyclonal
Form	Liquid
Storage	Store at 4°C short term. Aliquot and store at -20°C long term. Avoid freeze/thaw cycles.
Buffer	Liquid in PBS containing 50% glycerol, 0.5% BSA and 0.02% New type preservative N.
Purification	Affinity purification

Immunogen

Gene Name	MZF1
Alternative Names	MZF1; MZF; ZNF42; ZSCAN6; Myeloid zinc finger 1; MZF-1; Zinc finger and SCAN domain-containing protein 6; Zinc finger protein 42
Gene ID	7593.0
SwissProt ID	P28698. The antiserum was produced against synthesized peptide derived from human MZF-1. AA range:1-50

Application

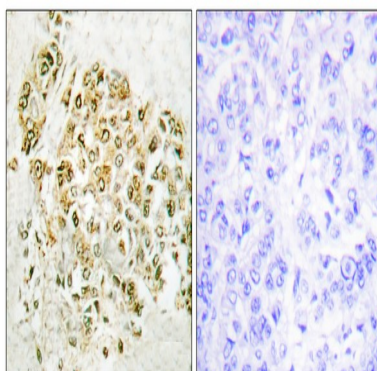
Dilution Ratio	WB 1:500 - 1:2000. IHC 1:100 - 1:300. ELISA: 1:10000..
Molecular Weight	82kD

Background

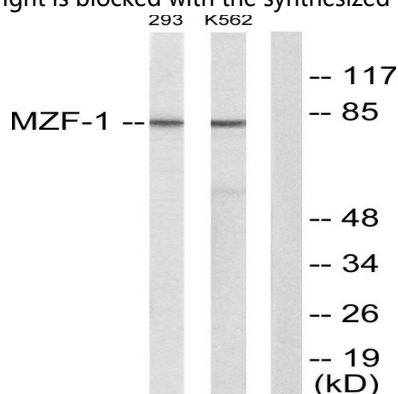
function:May be one regulator of transcriptional events during hemopoietic development.,induction:By retinoic acid.,similarity:Belongs to the krueppel C2H2-type zinc-finger protein family.,similarity:Contains 1 SCAN box domain.,similarity:Contains 13 C2H2-type zinc fingers.,tissue specificity:Preferentially expressed in differentiating myeloid cells.,function:May be one regulator of transcriptional events during hemopoietic development.,induction:By retinoic acid.,similarity:Belongs to the krueppel C2H2-type zinc-finger protein family.,similarity:Contains 1 SCAN box domain.,similarity:Contains 13 C2H2-type zinc fingers.,tissue specificity:Preferentially expressed in differentiating myeloid cells.,

Research Area

Image Data

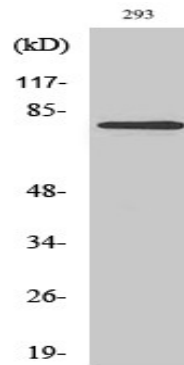


Immunohistochemistry analysis of paraffin-embedded human breast carcinoma tissue, using MZF-1 Antibody. The picture on the right is blocked with the synthesized peptide.



Western blot analysis of lysates from 293 and K562 cells, using MZF-1 Antibody. The lane on the right is blocked with the synthesized peptide.

Product Name: MZF-1 Rabbit Polyclonal Antibody
Catalog #: APRab14360



Western Blot analysis of various cells using MZF-1 Polyclonal Antibody diluted at 1: 2000 cells nucleus extracted by Minute TM Cytoplasmic and Nuclear Fractionation kit (SC-003, Inventbiotech, MN, USA) .

Note

For research use only.