

Product Name: MYOZ2 Rabbit Polyclonal Antibody
Catalog #: APRab14350



Summary

Production Name	MYOZ2 Rabbit Polyclonal Antibody
Description	Rabbit Polyclonal Antibody
Host	Rabbit
Application	WB
Reactivity	Human,Mouse,Rat

Performance

Conjugation	Unconjugated
Modification	Unmodified
Isotype	IgG
Clonality	Polyclonal
Form	Liquid
Storage	Store at 4°C short term. Aliquot and store at -20°C long term. Avoid freeze/thaw cycles.
Buffer	Liquid in PBS containing 50% glycerol, 0.5% BSA and 0.02% New type preservative N.
Purification	Affinity purification

Immunogen

Gene Name	MYOZ2 C4orf5
Alternative Names	MYOZ2 C4orf5
Gene ID	51778.0
SwissProt ID	Q9NPC6.The antiserum was produced against synthesized peptide derived from the Internal region of human MYOZ2. AA range:21-70

Application

Dilution Ratio	WB 1:500-2000 ELISA 2000-20000
Molecular Weight	30kD

Background

The protein encoded by this gene belongs to a family of sarcomeric proteins that bind to calcineurin, a phosphatase

Product Name: MYOZ2 Rabbit Polyclonal Antibody
Catalog #: APRab14350

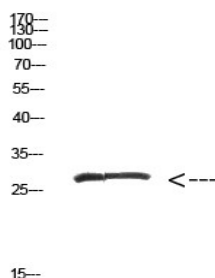


involved in calcium-dependent signal transduction in diverse cell types. These family members tether calcineurin to alpha-actinin at the z-line of the sarcomere of cardiac and skeletal muscle cells, and thus they are important for calcineurin signaling. Mutations in this gene cause cardiomyopathy familial hypertrophic type 16, a hereditary heart disorder.

[provided by RefSeq, Aug 2011],function:Myozenins may serve as intracellular binding proteins involved in linking Z-disk proteins such as alpha-actinin, gamma-filamin, TCAP/telethonin, LDB3/ZASP and localizing calcineurin signaling to the sarcomere. Plays an important role in the modulation of calcineurin signaling. May play a role in myofibrillogenesis.,similarity:Belongs to the myozenin family.,subcellular location:Colocalizes with ACTN1 and PPP3CA at the Z-line of heart and skeletal muscle.,subunit:Interacts via its C-terminus with spectrin repeats 3 and 4 of ACTN2. Interacts with ATCN1, LDB3, MYOT and PPP3CA.,tissue specificity:Expressed specifically in heart and skeletal muscle.,

Research Area

Image Data



Western Blot analysis of hepg2 cells using Antibody diluted at 500. Secondary antibody was diluted at 1:20000

Note

For research use only.