

Summary

Production Name	MYLIP Rabbit Polyclonal Antibody
Description	Rabbit Polyclonal Antibody
Host	Rabbit
Application	IHC,WB,
Reactivity	Human,Mouse,Rat

Performance

Conjugation	Unconjugated
Modification	Unmodified
Isotype	IgG
Clonality	Polyclonal
Form	Liquid
Storage	Store at 4°C short term. Aliquot and store at -20°C long term. Avoid freeze/thaw cycles.
Buffer	Liquid in PBS containing 50% glycerol, 0.5% BSA and 0.02% New type preservative N.
Purification	Affinity purification

Immunogen

Gene Name	MYLIP
Alternative Names	MYLIP; BZF1; IDOL; BM-023; PP5242; E3 ubiquitin-protein ligase MYLIP; Inducible degrader of the LDL-receptor; Idol; Myosin regulatory light chain interacting protein; MIR
Gene ID	29116.0
SwissProt ID	Q8WY64.The antiserum was produced against synthesized peptide derived from human MYLIP. AA range:161-210

Application

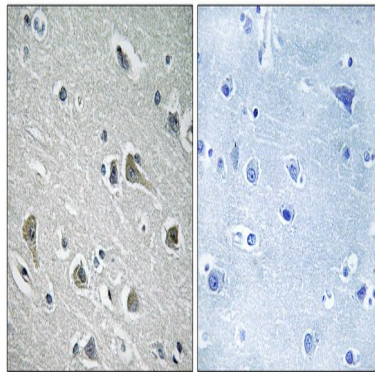
Dilution Ratio	WB 1:500 - 1:2000. IHC 1:100 - 1:300. ELISA: 1:20000..
Molecular Weight	50kD

Background

The ERM protein family members ezrin, radixin, and moesin are cytoskeletal effector proteins linking actin to membrane-bound proteins at the cell surface. Myosin regulatory light chain interacting protein (MYLIP) is a novel ERM-like protein that interacts with myosin regulatory light chain and inhibits neurite outgrowth. [provided by RefSeq, Jul 2008],developmental stage:Expressed in fetal tissues and higher levels were detected in placenta and fetal lung.,domain:The RING domain mediates ubiquitination and the neurite outgrowth inhibitory activity.,function:E3 ubiquitin-protein ligase that mediates ubiquitination and subsequent proteasomal degradation of myosin regulatory light chain (MRLC). Stable or transient overexpression of MIR induces proteasomal degradation of MRLC inhibiting neurite outgrowth in presence of NGF. MIR counteracts the stabilization of MRLC by MIR-interacting saposin-like protein (MSAP/TMEM4) and reduces MSAP-stimulated neurite outgrowth.,pathway:Protein modification; protein ubiquitination.,PTM:Autoubiquitinated.,similarity:Contains 1 FERM domain.,similarity:Contains 1 RING-type zinc finger.,subunit:Interacts with myosin regulatory light chain (MRLC) and TMEM4.,tissue specificity:Ubiquitously expressed.,

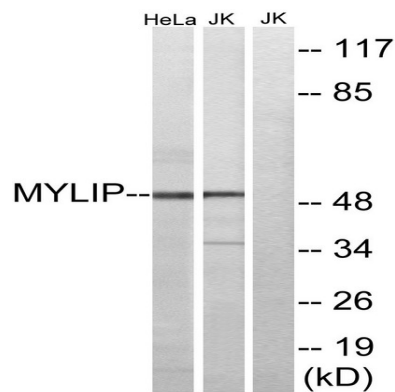
Research Area

Image Data

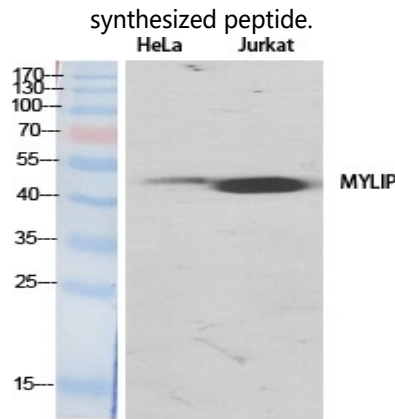


Immunohistochemistry analysis of paraffin-embedded human brain tissue, using MYLIP Antibody. The picture on the right is blocked with the synthesized peptide.

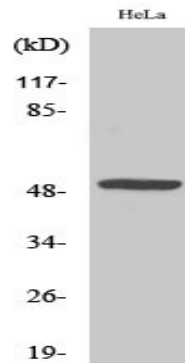
Product Name: MYLIP Rabbit Polyclonal Antibody
Catalog #: APRab14314



Western blot analysis of lysates from HeLa and Jurkat cells, using MYLIP Antibody. The lane on the right is blocked with the synthesized peptide.



Western Blot analysis of various cells using MYLIP Polyclonal Antibody



Western Blot analysis of Jurkat cells using MYLIP Polyclonal Antibody

Note

For research use only.