

Product Name: MYH15 Rabbit Polyclonal Antibody
Catalog #: APRab14293



Summary

Production Name	MYH15 Rabbit Polyclonal Antibody
Description	Rabbit Polyclonal Antibody
Host	Rabbit
Application	WB
Reactivity	Human,Rat,Mouse

Performance

Conjugation	Unconjugated
Modification	Unmodified
Isotype	IgG
Clonality	Polyclonal
Form	Liquid
Storage	Store at 4°C short term. Aliquot and store at -20°C long term. Avoid freeze/thaw cycles.
Buffer	Liquid in PBS containing 50% glycerol, 0.5% BSA and 0.02% New type preservative N.
Purification	Affinity purification

Immunogen

Gene Name	MYH15
Alternative Names	MYH15; KIAA1000; Myosin-15; Myosin heavy chain 15
Gene ID	22989.0
SwissProt ID	Q9Y2K3.The antiserum was produced against synthesized peptide derived from human MYH15. AA range:624-673

Application

Dilution Ratio	WB 1:500-2000
Molecular Weight	225kD

Background

Product Name: MYH15 Rabbit Polyclonal Antibody
Catalog #: APRab14293

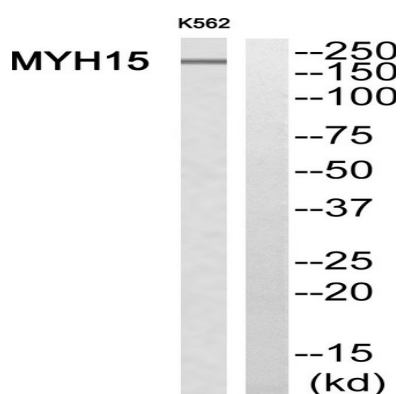


domain: The rodlike tail sequence is highly repetitive, showing cycles of a 28-residue repeat pattern composed of 4 heptapeptides, characteristic for alpha-helical coiled coils., function: Muscle contraction., similarity: Contains 1 IQ domain., similarity: Contains 1 myosin head-like domain., subcellular location: Thick filaments of the myofibrils., subunit: Muscle myosin is a hexameric protein that consists of 2 heavy chain subunits (MHC), 2 alkali light chain subunits (MLC) and 2 regulatory light chain subunits (MLC-2)., domain: The rodlike tail sequence is highly repetitive, showing cycles of a 28-residue repeat pattern composed of 4 heptapeptides, characteristic for alpha-helical coiled coils., function: Muscle contraction., similarity: Contains 1 IQ domain., similarity: Contains 1 myosin head-like domain., subcellular location: Thick filaments of the myofibrils., subunit: Muscle myosin is a hexameric protein that consists of 2 heavy chain subunits (MHC), 2 alkali light chain subunits (MLC) and 2 regulatory light chain subunits (MLC-2).

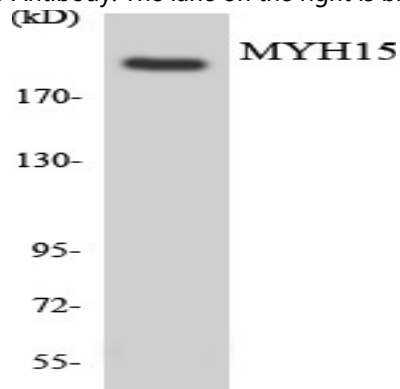
Research Area

Tight junction; Viral myocarditis;

Image Data



Western blot analysis of MYH15 Antibody. The lane on the right is blocked with the MYH15 peptide.



Western blot analysis of the lysates from Jurkat cells using MYH15 antibody.

Note

For research use only.

Product Name: MYH15 Rabbit Polyclonal Antibody
Catalog #: APRab14293

