

Product Name: MY18B Rabbit Polyclonal Antibody
Catalog #: APRab14260



Summary

Production Name	MY18B Rabbit Polyclonal Antibody
Description	Rabbit Polyclonal Antibody
Host	Rabbit
Application	WB,ELISA
Reactivity	Human,Rat,Mouse

Performance

Conjugation	Unconjugated
Modification	Unmodified
Isotype	IgG
Clonality	Polyclonal
Form	Liquid
Storage	Store at 4°C short term. Aliquot and store at -20°C long term. Avoid freeze/thaw cycles.
Buffer	Liquid in PBS containing 50% glycerol, and 0.02% New type preservative N.
Purification	Affinity purification

Immunogen

Gene Name	MYO18B
Alternative Names	
Gene ID	84700.0
SwissProt ID	Q8IUG5.Synthesized peptide derived from human protein . at AA range: 1680-1760

Application

Dilution Ratio	IHC 1:50-300
Molecular Weight	282kD

Background

The protein encoded by this gene may regulate muscle-specific genes when in the nucleus and may influence intracellular trafficking when in the cytoplasm. The encoded protein functions as a homodimer and may interact with F actin. Mutations

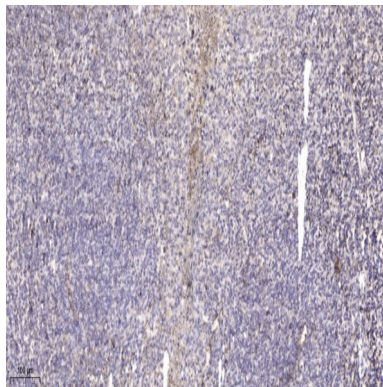
Product Name: MY18B Rabbit Polyclonal Antibody
Catalog #: APRab14260



in this gene are associated with lung cancer. [provided by RefSeq, Jul 2008],developmental stage:Reaches an expression peak in the third day after induction and remains at similar level during successive myotubule maturation.,disease:Defects in MYO18B are associated with lung cancer. Inactivated in half of the primary lung cancers and cell lines; the causes include deletions, mutations and promoter methylation.,function:May be involved in intracellular trafficking of the muscle cell when in the cytoplasm, whereas entering the nucleus, may be involved in the regulation of muscle specific genes. May play an important role as a tumor suppressor in the development of lung cancer.,similarity:Contains 1 IQ domain.,similarity:Contains 1 myosin head-like domain.,subcellular location:Punctate pattern in undifferentiated myoblasts. Nuclear, on primary cardiomyocytes and adult muscle. A partial sarcomeric location was found in some cardiomyocytes.,subunit:Homodimer. May interact with F actin through the GPA motif (Gly/Pro/Ala-rich),.tissue specificity:Selectively expressed in cardiac and skeletal muscles. Weakly expressed in testis, pancreas, placenta, prostate, lung and thymus.,

Research Area

Image Data



Immunohistochemical analysis of paraffin-embedded human tonsil. 1, Antibody was diluted at 1:200 (4° overnight) . 2, Tris-EDTA,pH9.0 was used for antigen retrieval. 3,Secondary antibody was diluted at 1:200 (room temperature, 45min) .

Note

For research use only.