

## Summary

<b>Production Name</b>	MXRA5 Rabbit Polyclonal Antibody
<b>Description</b>	Rabbit Polyclonal Antibody
<b>Host</b>	Rabbit
<b>Application</b>	WB,ELISA
<b>Reactivity</b>	Human,Rat,Mouse

## Performance

<b>Conjugation</b>	Unconjugated
<b>Modification</b>	Unmodified
<b>Isotype</b>	IgG
<b>Clonality</b>	Polyclonal
<b>Form</b>	Liquid
<b>Storage</b>	Store at 4°C short term. Aliquot and store at -20°C long term. Avoid freeze/thaw cycles.
<b>Buffer</b>	Liquid in PBS containing 50% glycerol, and 0.02% New type preservative N.
<b>Purification</b>	Affinity purification

## Immunogen

<b>Gene Name</b>	MXRA5
<b>Alternative Names</b>	
<b>Gene ID</b>	25878.0
<b>SwissProt ID</b>	Q9NR99.Synthesized peptide derived from part region of human protein

## Application

<b>Dilution Ratio</b>	IHC 1:50-300
<b>Molecular Weight</b>	311kD

## Background

This gene encodes one of the matrix-remodelling associated proteins. This protein contains 7 leucine-rich repeats and 12 immunoglobulin-like C2-type domains related to perlecan. This gene has a pseudogene on chromosome Y. [provided by

**Product Name: MXRA5 Rabbit Polyclonal Antibody**  
**Catalog #: APRab14256**

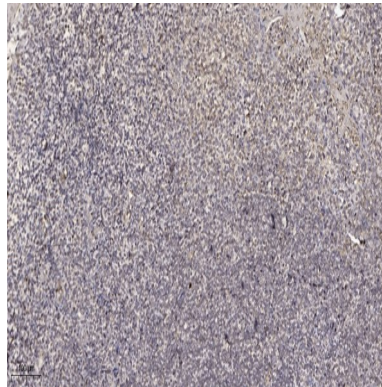


---

RefSeq, Mar 2010],developmental stage:Over-expressed in centenarians. Expression is reduced from young to old but increased from old to centenarians.,sequence caution:Contaminating sequence. Potential poly-A sequence.,similarity:Contains 12 Ig-like C2-type (immunoglobulin-like) domains.,similarity:Contains 7 LRR (leucine-rich) repeats.,

## Research Area

## Image Data



Immunohistochemical analysis of paraffin-embedded human tonsil. 1, Antibody was diluted at 1:200 (4° overnight) . 2, Tris-EDTA,pH9.0 was used for antigen retrieval. 3,Secondary antibody was diluted at 1:200 (room temperature, 30min) .

## Note

For research use only.