

**Product Name: MUM1 Rabbit Polyclonal Antibody**  
**Catalog #: APRab14243**



## Summary

|                        |                                 |
|------------------------|---------------------------------|
| <b>Production Name</b> | MUM1 Rabbit Polyclonal Antibody |
| <b>Description</b>     | Rabbit Polyclonal Antibody      |
| <b>Host</b>            | Rabbit                          |
| <b>Application</b>     | WB                              |
| <b>Reactivity</b>      | Human,Mouse,Rat                 |

## Performance

|                     |  |
|---------------------|--|
| <b>Conjugation</b>  | Unconjugated   |
| <b>Modification</b> | Unmodified   |
| <b>Isotype</b>      | IgG  |
| <b>Clonality</b>    | Polyclonal   |
| <b>Form</b>         | Liquid   |
| <b>Storage</b>      | Store at 4°C short term. Aliquot and store at -20°C long term. Avoid freeze/thaw cycles. |
| <b>Buffer</b>       | Liquid in PBS containing 50% glycerol, 0.5% BSA and 0.02% New type preservative N.       |
| <b>Purification</b> | Affinity purification  |

## Immunogen

|                          |  |
|--------------------------|--|
| <b>Gene Name</b>         | MUM1 EXPAND1   |
| <b>Alternative Names</b> | melanoma associated antigen (mutated) 1  |
| <b>Gene ID</b>           | 84939.0  |
| <b>SwissProt ID</b>      | Q2TAK8.The antiserum was produced against synthesized peptide derived from the C-terminal region of human MUM1. AA range:661-710 |

## Application

|                         |                                |
|-------------------------|--------------------------------|
| <b>Dilution Ratio</b>   | WB 1:500-2000 ELISA 2000-20000 |
| <b>Molecular Weight</b> | 78kD                           |

## Background

PTM:Phosphorylated upon DNA damage, probably by ATM or ATR.,similarity:Belongs to the MUM1

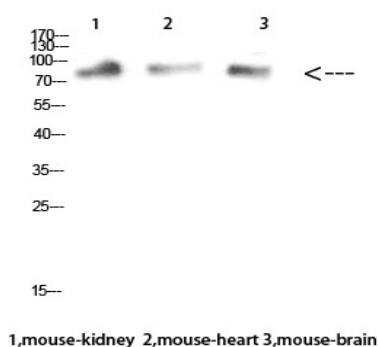
**Product Name: MUM1 Rabbit Polyclonal Antibody**  
**Catalog #: APRab14243**



family.,PTM:Phosphorylated upon DNA damage, probably by ATM or ATR.,similarity:Belongs to the MUM1 family.,

## Research Area

## Image Data



Western Blot analysis of mouse-kidney mouse-heart mouse-brain cells using MUM1 Polyclonal Antibody diluted at 1:1000.  
Secondary antibody was diluted at 1:20000

## Note

For research use only.