
Summary

Production Name	Mucin 16 Rabbit Polyclonal Antibody
Description	Rabbit Polyclonal Antibody
Host	Rabbit
Application	WB,IHC
Reactivity	Human,Rat,Mouse

Performance

Conjugation	Unconjugated
Modification	Unmodified
Isotype	IgG
Clonality	Polyclonal
Form	Liquid
Storage	Store at 4°C short term. Aliquot and store at -20°C long term. Avoid freeze/thaw cycles.
Buffer	Liquid in PBS containing 50% glycerol, 0.5% BSA and 0.02% New type preservative N.
Purification	Affinity purification

Immunogen

Gene Name	MUC16
Alternative Names	MUC16; CA125; Mucin-16; MUC-16; Ovarian cancer-related tumor marker CA125; CA-125; Ovarian carcinoma antigen CA125
Gene ID	94025.0
SwissProt ID	Q8WXI7.The antiserum was produced against synthesized peptide derived from human MUC16. AA range:13311-13360

Application

Dilution Ratio	WB 1:500-2000;IHC-p 1:50-300
Molecular Weight	

Background

domain:Composed of three domains, a Ser-, Thr-rich N-terminal domain, a repeated domain containing more than 60 partially conserved tandem repeats of 156 amino acids each (AAs 12061-21862) and a C-terminal transmembrane domain with a short cytoplasmic tail.,function:Thought to provide a protective, lubricating barrier against particles and infectious agents at mucosal surfaces.,induction:Up-regulated in ovarian cancer cells.,miscellaneous:Antigen that is the basis for a widely used serum assay for the monitoring of patients with ovarian epithelial cancer. Due to lack of sensitivity for stage I disease and lack of specificity, it is of little value in the detection of early ovarian cancer. Due to its similarly elevated levels in some nonmalignant conditions, it is not specific enough to be used for population screening.,polymorphism:The number of repeats is highly polymorphic.,PTM:Heavily N-glycosylated; expresses primarily high mannose and complex bisecting type N-linked glycans.,PTM:Heavily O-glycosylated; expresses both type 1 and type 2 core glycans.,PTM:May be phosphorylated. Phosphorylation of the intracellular C-terminal domain may induce proteolytic cleavage and the liberation of the extracellular domain into the extracellular space.,PTM:May contain numerous disulfide bridges. Association of several molecules of the secreted form may occur through interchain disulfide bridges providing an extraordinarily large gel-like matrix in the extracellular space or in the lumen of secretory ducts.,similarity:Contains 14 LRR (leucine-rich) repeats.,similarity:Contains 2 ANK repeats.,similarity:Contains 56 SEA domains.,subcellular location:May be liberated into the extracellular space following the phosphorylation of the intracellular C-terminus which induces the proteolytic cleavage and liberation of the extracellular domain.,subunit:Binds to MSLN. Binding to MSLN mediates heterotypic cell adhesion. This may contribute to the metastasis of ovarian cancer to the peritoneum by initiating cell attachment to the mesothelial epithelium via binding to MSLN.,tissue specificity:Expressed in corneal and conjunctival epithelia (at protein level). Overexpressed in ovarian carcinomas and ovarian low malignant potential (LMP) tumors as compared to the expression in normal ovarian tissue and ovarian adenomas.,domain:Composed of three domains, a Ser-, Thr-rich N-terminal domain, a repeated domain containing more than 60 partially conserved tandem repeats of 156 amino acids each (AAs 12061-21862) and a C-terminal transmembrane domain with a short cytoplasmic tail.,function:Thought to provide a protective, lubricating barrier against particles and infectious agents at mucosal surfaces.,induction:Up-regulated in ovarian cancer cells.,miscellaneous:Antigen that is the basis for a widely used serum assay for the monitoring of patients with ovarian epithelial cancer. Due to lack of sensitivity for stage I disease and lack of specificity, it is of little value in the detection of early ovarian cancer. Due to its similarly elevated levels in some nonmalignant conditions, it is not specific enough to be used for population screening.,polymorphism:The number of repeats is highly polymorphic.,PTM:Heavily N-glycosylated; expresses primarily high mannose and complex bisecting type N-linked glycans.,PTM:Heavily O-glycosylated; expresses both type 1 and type 2 core glycans.,PTM:May be phosphorylated. Phosphorylation of the intracellular C-terminal domain may induce proteolytic cleavage and the liberation of the extracellular domain into the extracellular space.,PTM:May contain numerous disulfide bridges. Association of several molecules of the secreted form may occur through interchain disulfide bridges providing an extraordinarily large gel-like matrix in the extracellular space or in the lumen of secretory ducts.,similarity:Contains 14 LRR (leucine-rich) repeats.,similarity:Contains 2 ANK repeats.,similarity:Contains 56 SEA domains.,subcellular location:May be liberated into the extracellular space following the phosphorylation of the intracellular C-terminus which induces the proteolytic cleavage

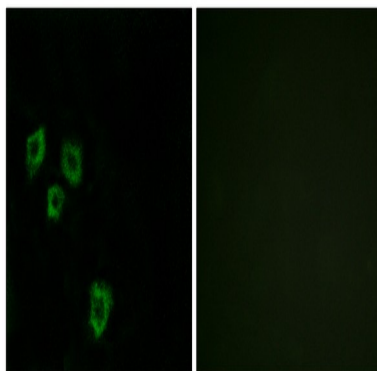
Product Name: Mucin 16 Rabbit Polyclonal Antibody
Catalog #: APRab14240



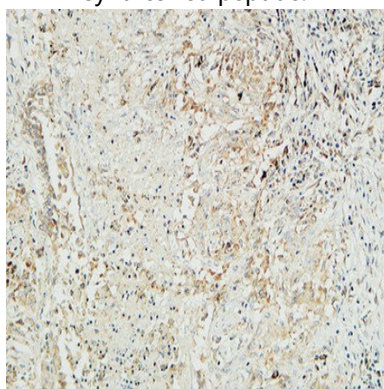
and liberation of the extracellular domain.,subunit: Binds to MSLN. Binding to MSLN mediates heterotypic cell adhesion. This may contribute to the metastasis of ovarian cancer to the peritoneum by initiating cell attachment to the mesothelial epithelium via binding to MSLN.,tissue specificity: Expressed in corneal and conjunctival epithelia (at protein level). Overexpressed in ovarian carcinomas and ovarian low malignant potential (LMP) tumors as compared to the expression in normal ovarian tissue and ovarian adenomas.,

Research Area

Image Data

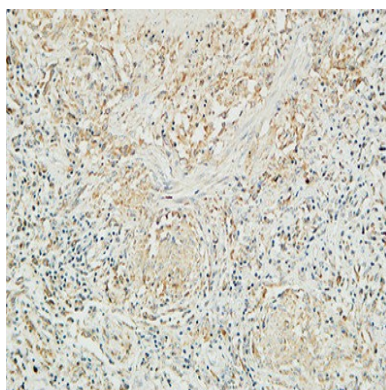


Immunofluorescence analysis of HepG2 cells, using MUC16 Antibody. The picture on the right is blocked with the synthesized peptide.

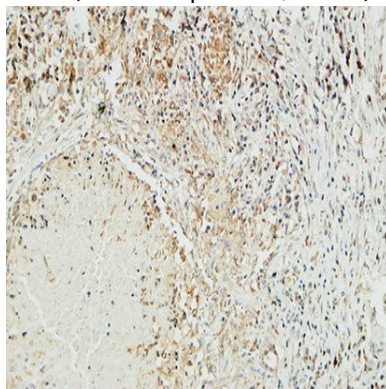


Immunohistochemical analysis of paraffin-embedded Human lung. 1, Antibody was diluted at 1:100 (4°,overnight) . 2, High-pressure and temperature EDTA, pH8.0 was used for antigen retrieval. 3,Secondary antibody was diluted at 1:200 (room temperature, 30min) .

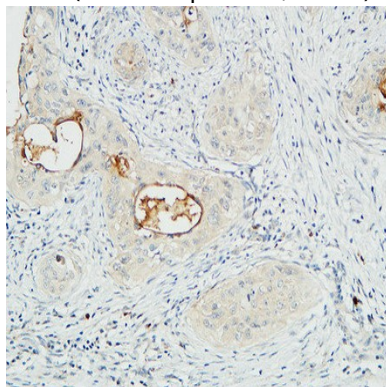
Product Name: Mucin 16 Rabbit Polyclonal Antibody
Catalog #: APRab14240



Immunohistochemical analysis of paraffin-embedded Human lung. 1, Antibody was diluted at 1:100 (4°,overnight) . 2, High-pressure and temperature EDTA, pH8.0 was used for antigen retrieval. 3,Secondary antibody was diluted at 1:200 (room temperature, 30min) .

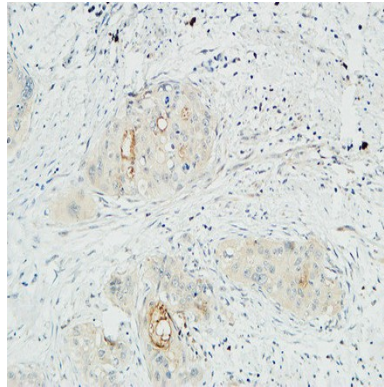


Immunohistochemical analysis of paraffin-embedded Human lung. 1, Antibody was diluted at 1:100 (4°,overnight) . 2, High-pressure and temperature EDTA, pH8.0 was used for antigen retrieval. 3,Secondary antibody was diluted at 1:200 (room temperature, 30min) .



Immunohistochemical analysis of paraffin-embedded Human cervical carcinoma. 1, Antibody was diluted at 1:100 (4°,overnight) . 2, High-pressure and temperature EDTA, pH8.0 was used for antigen retrieval. 3,Secondary antibody was diluted at 1:200 (room temperature, 30min) .

Product Name: Mucin 16 Rabbit Polyclonal Antibody
Catalog #: APRab14240



Immunohistochemical analysis of paraffin-embedded Human cervical carcinoma. 1, Antibody was diluted at 1:100 (4°,overnight) . 2, High-pressure and temperature EDTA, pH8.0 was used for antigen retrieval. 3,Secondary antibody was diluted at 1:200 (room temperature, 30min) .

Note

For research use only.