

Product Name: MSY2 Rabbit Polyclonal Antibody
Catalog #: APRab14193



Summary

Production Name	MSY2 Rabbit Polyclonal Antibody
Description	Rabbit Polyclonal Antibody
Host	Rabbit
Application	WB,ELISA
Reactivity	Human,Mouse

Performance

Conjugation	Unconjugated
Modification	Unmodified
Isotype	IgG
Clonality	Polyclonal
Form	Liquid
Storage	Store at 4°C short term. Aliquot and store at -20°C long term. Avoid freeze/thaw cycles.
Buffer	Liquid in PBS containing 50% glycerol, 0.5% BSA and 0.02% New type preservative N.
Purification	Affinity purification

Immunogen

Gene Name	YBX2
Alternative Names	YBX2; CSDA3; MSY2; Y-box-binding protein 2; Contrin; DNA-binding protein C; Dbpc; Germ cell-specific Y-box-binding protein; MSY2 homolog
Gene ID	51087.0
SwissProt ID	Q9Y2T7.The antiserum was produced against synthesized peptide derived from human YBOX2. AA range:281-330

Application

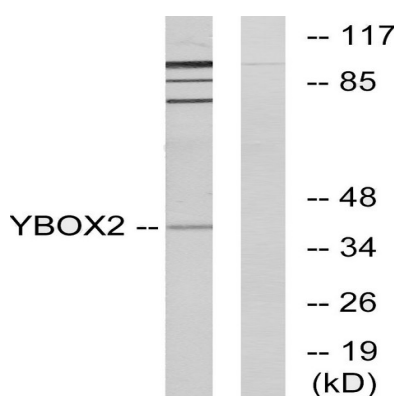
Dilution Ratio	WB 1:500 - 1:2000. ELISA: 1:10000
Molecular Weight	38kD

Background

This gene encodes a nucleic acid binding protein which is highly expressed in germ cells. The encoded protein binds to a Y-box element in the promoters of certain genes but also binds to mRNA transcribed from these genes. Pseudogenes for this gene are located on chromosome 10 and 15. [provided by RefSeq, Feb 2012],function:Major constituent of messenger ribonucleoprotein particles (mRNPs). Involved in the regulation of the stability and/or translation of germ cell mRNAs. Binds to Y-box consensus promoter element. Binds to full length mRNA with high affinity in a sequence-independent manner. Binds to short RNA sequences containing the consensus site 5'-UCCAUCA-3' with low affinity and limited sequence specificity. Its binding with maternal mRNAs is necessary for its cytoplasmic retention. May mark specific mRNAs (those transcribed from Y-box promoters) in the nucleus for cytoplasmic storage, thereby linking transcription and mRNA storage/translational delay.,PTM:Phosphorylated during oocyte maturation and dephosphorylated following egg activation. Phosphorylated in vitro by a kinase activity associated with testicular mRNPs. Dephosphorylation leads to a decrease in its affinity to bind RNA in vitro.,similarity:Contains 1 CSD (cold-shock) domain.,subunit:Found in a mRNP complex with PABPC1 and CSDA.,tissue specificity:Expressed in oocytes and testicular germ cells in the stage of spermatogonia to spermatocyte. Also observed placental trophoblasts, as well as in vascular smooth muscle cells in the pulmonary artery, myocardium, and skeletal muscle. Undetectable in epithelial cells in respiratory, gastrointestinal, and urogenital tracts. Up-regulated in various carcinomas and germ cell tumors (at protein level),,

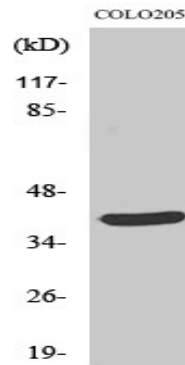
Research Area

Image Data



Western blot analysis of lysates from COLO205 cells, using YBOX2 Antibody. The lane on the right is blocked with the synthesized peptide.

Product Name: MSY2 Rabbit Polyclonal Antibody
Catalog #: APRab14193



Western Blot analysis of various cells using MSY2 Polyclonal Antibody

Note

For research use only.