

Summary

| | |
|------------------------|------------------------------------|
| Production Name | MRP-L47 Rabbit Polyclonal Antibody |
| Description | Rabbit Polyclonal Antibody |
| Host | Rabbit |
| Application | WB |
| Reactivity | Human,Rat,Mouse |

Performance

| | |
|---------------------|--|
| Conjugation | Unconjugated |
| Modification | Unmodified |
| Isotype | IgG |
| Clonality | Polyclonal |
| Form | Liquid |
| Storage | Store at 4°C short term. Aliquot and store at -20°C long term. Avoid freeze/thaw cycles. |
| Buffer | Liquid in PBS containing 50% glycerol, 0.5% BSA and 0.02% New type preservative N. |
| Purification | Affinity purification |

Immunogen

| | |
|--------------------------|--|
| Gene Name | MRPL47 |
| Alternative Names | MRPL47; NCM1; CGI-204; 39S ribosomal protein L47; mitochondrial; L47mt; MRP-L47; Nasopharyngeal carcinoma metastasis-related protein 1 |
| Gene ID | 57129.0 |
| SwissProt ID | Q9HD33.The antiserum was produced against synthesized peptide derived from human MRPL47. AA range:191-240 |

Application

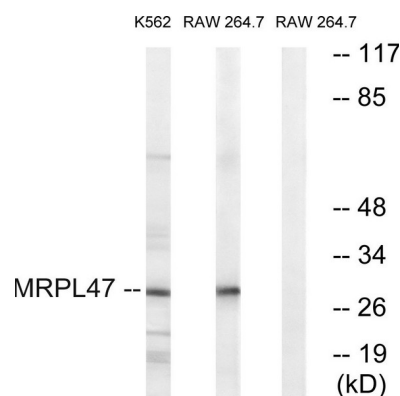
| | |
|-------------------------|---------------|
| Dilution Ratio | WB 1:500-2000 |
| Molecular Weight | 30kD |

Background

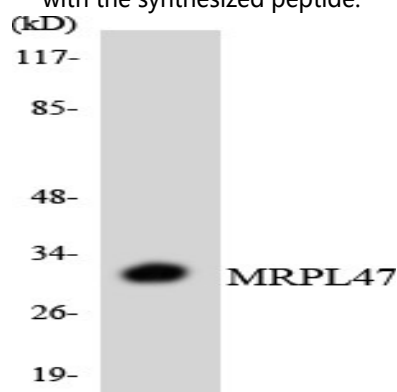
Mammalian mitochondrial ribosomal proteins are encoded by nuclear genes and help in protein synthesis within the mitochondrion. Mitochondrial ribosomes (mitoribosomes) consist of a small 28S subunit and a large 39S subunit. They have an estimated 75% protein to rRNA composition compared to prokaryotic ribosomes, where this ratio is reversed. Another difference between mammalian mitoribosomes and prokaryotic ribosomes is that the latter contain a 5S rRNA. Among different species, the proteins comprising the mitoribosome differ greatly in sequence, and sometimes in biochemical properties, which prevents easy recognition by sequence homology. This gene encodes a 39S subunit protein. This gene is immediately adjacent to the gene for BAF complex 53 kDa subunit protein a (BAF53a), in a tail-to-tail orientation. Two transcript variants encoding different protein isoforms have been identified. **Caution:** Chimeric cDNA. Seems to include a portion of the orthologous murine sequence. **Similarity:** Belongs to the ribosomal protein L47em family.

Research Area

Image Data



Western blot analysis of lysates from RAW264.7 and K562 cells, using MRPL47 Antibody. The lane on the right is blocked with the synthesized peptide.



Western blot analysis of the lysates from 293 cells using MRPL47 antibody.

Product Name: MRP-L47 Rabbit Polyclonal Antibody
Catalog #: APRab14132



Note

For research use only.