

## Summary

<b>Production Name</b>	MRP-L46 Rabbit Polyclonal Antibody
<b>Description</b>	Rabbit Polyclonal Antibody
<b>Host</b>	Rabbit
<b>Application</b>	IHC,WB,
<b>Reactivity</b>	Human,Mouse,Rat

## Performance

<b>Conjugation</b>	Unconjugated
<b>Modification</b>	Unmodified
<b>Isotype</b>	IgG
<b>Clonality</b>	Polyclonal
<b>Form</b>	Liquid
<b>Storage</b>	Store at 4°C short term. Aliquot and store at -20°C long term. Avoid freeze/thaw cycles.
<b>Buffer</b>	Liquid in PBS containing 50% glycerol, 0.5% BSA and 0.02% New type preservative N.
<b>Purification</b>	Affinity purification

## Immunogen

<b>Gene Name</b>	MRPL46
<b>Alternative Names</b>	MRPL46; C15orf4; LIECG2; 39S ribosomal protein L46; mitochondrial; L46mt; MRP-L46; P2ECSL
<b>Gene ID</b>	26589.0
<b>SwissProt ID</b>	Q9H2W6.The antiserum was produced against synthesized peptide derived from human MRPL46. AA range:111-160

## Application

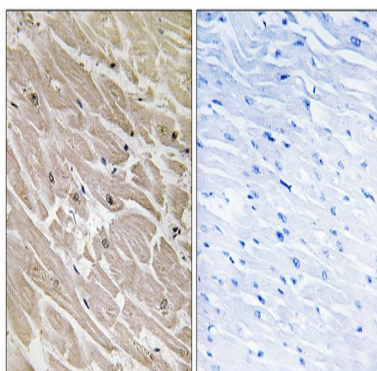
<b>Dilution Ratio</b>	WB 1:500 - 1:2000. IHC 1:100 - 1:300. ELISA: 1:40000..
<b>Molecular Weight</b>	32kD

## Background

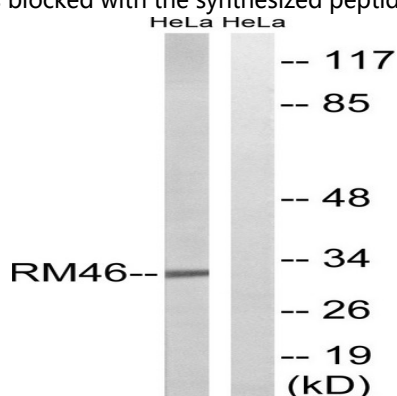
Mammalian mitochondrial ribosomal proteins are encoded by nuclear genes and help in protein synthesis within the mitochondrion. Mitochondrial ribosomes (mitoribosomes) consist of a small 28S subunit and a large 39S subunit. They have an estimated 75% protein to rRNA composition compared to prokaryotic ribosomes, where this ratio is reversed. Another difference between mammalian mitoribosomes and prokaryotic ribosomes is that the latter contain a 5S rRNA. Among different species, the proteins comprising the mitoribosome differ greatly in sequence, and sometimes in biochemical properties, which prevents easy recognition by sequence homology. This gene encodes a 39S subunit protein. [provided by RefSeq, Jul 2008],similarity:Belongs to the ribosomal protein L46 family.,

## Research Area

## Image Data

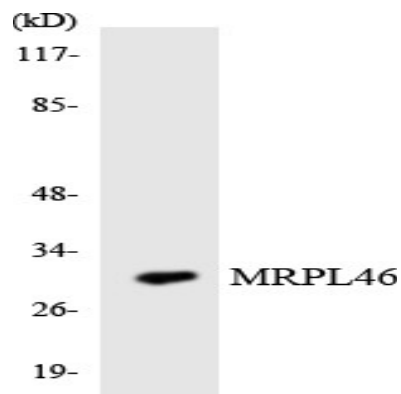


Immunohistochemistry analysis of paraffin-embedded human heart tissue, using MRPL46 Antibody. The picture on the right is blocked with the synthesized peptide.

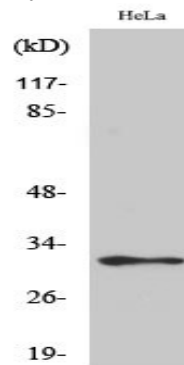


Western blot analysis of lysates from HeLa cells, using MRPL46 Antibody. The lane on the right is blocked with the synthesized peptide.

Product Name: MRP-L46 Rabbit Polyclonal Antibody  
Catalog #: APRab14131



Western blot analysis of the lysates from HUVEC cells using MRPL46 antibody.



Western Blot analysis of various cells using MRP-L46 Polyclonal Antibody diluted at 1: 500

### Note

For research use only.