

Summary

Production Name	MRP-L41 Rabbit Polyclonal Antibody
Description	Rabbit Polyclonal Antibody
Host	Rabbit
Application	IHC,WB,ELISA
Reactivity	Human,Mouse,Rat

Performance

Conjugation	Unconjugated
Modification	Unmodified
Isotype	IgG
Clonality	Polyclonal
Form	Liquid
Storage	Store at 4°C short term. Aliquot and store at -20°C long term. Avoid freeze/thaw cycles.
Buffer	Liquid in PBS containing 50% glycerol, 0.5% BSA and 0.02% New type preservative N.
Purification	Affinity purification

Immunogen

Gene Name	MRPL41
Alternative Names	MRPL41; BMRP; MRPL27; RPML27; PIG3; 39S ribosomal protein L41; mitochondrial; L41mt; MRP-L41; 39S ribosomal protein L27 homolog; Bcl-2-interacting mitochondrial ribosomal protein L41; Cell proliferation-inducing gene 3 protein; MRP-L27 homo
Gene ID	64975.0
SwissProt ID	Q8IXM3.The antiserum was produced against synthesized peptide derived from human MRPL41. AA range:81-130

Application

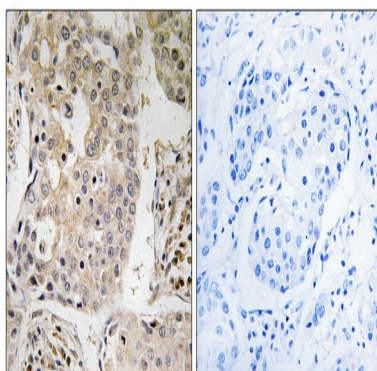
Dilution Ratio	WB 1:500 - 1:2000. IHC 1:100 - 1:300. ELISA: 1:40000..
Molecular Weight	21kD

Background

Mammalian mitochondrial ribosomal proteins are encoded by nuclear genes and help in protein synthesis within the mitochondrion. Mitochondrial ribosomes (mitoribosomes) consist of a small 28S subunit and a large 39S subunit. They have an estimated 75% protein to rRNA composition compared to prokaryotic ribosomes, where this ratio is reversed. Another difference between mammalian mitoribosomes and prokaryotic ribosomes is that the latter contain a 5S rRNA. Among different species, the proteins comprising the mitoribosome differ greatly in sequence, and sometimes in biochemical properties, which prevents easy recognition by sequence homology. This gene encodes a 39S subunit protein that belongs to the YmL27 ribosomal protein family. [provided by RefSeq, Jul 2008],function:Component of the mitochondrial ribosome large subunit. Also involved in apoptosis and cell cycle. Enhances TP53/p53 stability, thereby contributing to TP53/p53-induced apoptosis in response to growth-inhibitory condition. Enhances TP53/p53 translocation to the mitochondria. Has the ability to arrest the cell cycle at the G1 phase, possibly by stabilizing the CDKN1A and CDKN1B (p27Kip1) proteins.,similarity:Belongs to the ribosomal protein L41 family.,subunit:Component of the mitochondrial ribosome large subunit (39S) which comprises a 16S rRNA and about 50 distinct proteins. Interacts with BCL2.,tissue specificity:Present in kidney, liver, thymus and testis, and at lower level in brain and spleen (at protein level),

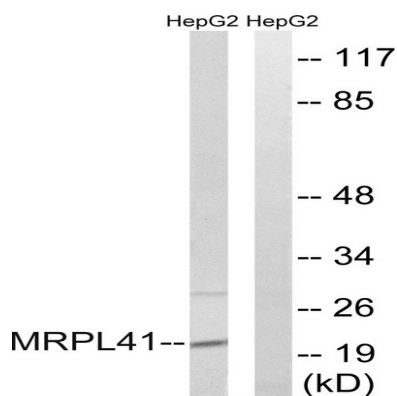
Research Area

Image Data



Immunohistochemistry analysis of paraffin-embedded human breast carcinoma tissue, using MRPL41 Antibody. The picture on the right is blocked with the synthesized peptide.

Product Name: MRP-L41 Rabbit Polyclonal Antibody
Catalog #: APRab14129



Western blot analysis of lysates from HepG2 cells, using MRPL41 Antibody. The lane on the right is blocked with the synthesized peptide.



Western Blot analysis of various cells using MRP-L41 Polyclonal Antibody

Note

For research use only.