

---

## Summary

<b>Production Name</b>	MRP-L4 Rabbit Polyclonal Antibody
<b>Description</b>	Rabbit Polyclonal Antibody
<b>Host</b>	Rabbit
<b>Application</b>	WB,IHC
<b>Reactivity</b>	Human,Mouse

## Performance

<b>Conjugation</b>	Unconjugated
<b>Modification</b>	Unmodified
<b>Isotype</b>	IgG
<b>Clonality</b>	Polyclonal
<b>Form</b>	Liquid
<b>Storage</b>	Store at 4°C short term. Aliquot and store at -20°C long term. Avoid freeze/thaw cycles.
<b>Buffer</b>	Liquid in PBS containing 50% glycerol, 0.5% BSA and 0.02% New type preservative N.
<b>Purification</b>	Affinity purification

## Immunogen

<b>Gene Name</b>	MRPL4
<b>Alternative Names</b>	MRPL4; CDABP0091; CGI-28; 39S ribosomal protein L4; mitochondrial; L4mt; MRP-L4
<b>Gene ID</b>	51073.0
<b>SwissProt ID</b>	Q9BYD3.The antiserum was produced against synthesized peptide derived from human MRPL4. AA range:90-139

## Application

<b>Dilution Ratio</b>	WB 1:500 - 1:2000. IHC 1:100 - 1:300. ELISA: 1:20000..
<b>Molecular Weight</b>	35kD

## Background

---

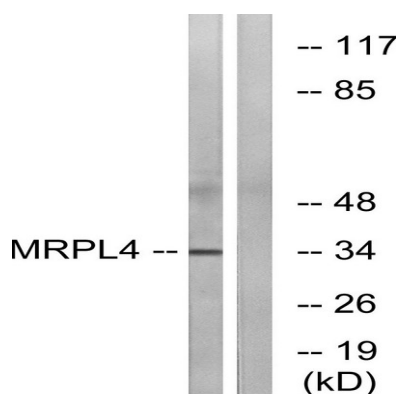
**Product Name: MRP-L4 Rabbit Polyclonal Antibody**  
**Catalog #: APRab14127**



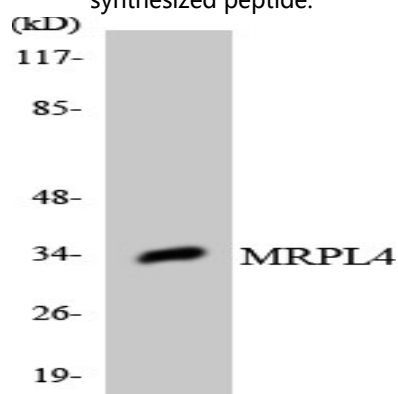
Mammalian mitochondrial ribosomal proteins are encoded by nuclear genes and help in protein synthesis within the mitochondrion. Mitochondrial ribosomes (mitoribosomes) consist of a small 28S subunit and a large 39S subunit. They have an estimated 75% protein to rRNA composition compared to prokaryotic ribosomes, where this ratio is reversed. Another difference between mammalian mitoribosomes and prokaryotic ribosomes is that the latter contain a 5S rRNA. Among different species, the proteins comprising the mitoribosome differ greatly in sequence, and sometimes in biochemical properties, which prevents easy recognition by sequence homology. This gene encodes a 39S subunit protein. Sequence analysis identified alternatively spliced variants that encode different protein isoforms. [provided by RefSeq, Jul 2008],similarity:Belongs to the ribosomal protein L4P family.,

## Research Area

## Image Data

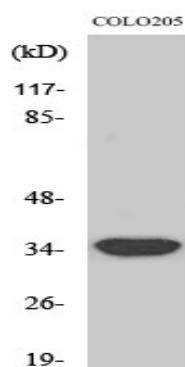


Western blot analysis of lysates from COLO cells, using MRPL4 Antibody. The lane on the right is blocked with the synthesized peptide.

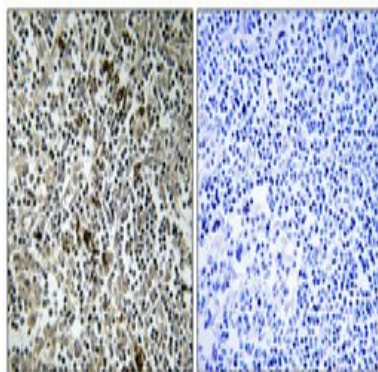


Western blot analysis of the lysates from HeLa cells using MRPL4 antibody.

**Product Name: MRP-L4 Rabbit Polyclonal Antibody**  
**Catalog #: APRab14127**



Western Blot analysis of various cells using MRP-L4 Polyclonal Antibody



Immunohistochemical analysis of paraffin-embedded Human lung cancer. Antibody was diluted at 1:100 (4°, overnight) . High-pressure and temperature Tris-EDTA, pH 8.0 was used for antigen retrieval. Negative control (right) obtained from antibody was pre-absorbed by immunogen peptide.

## **Note**

For research use only.