

Summary

Production Name	MRP-L39 Rabbit Polyclonal Antibody
Description	Rabbit Polyclonal Antibody
Host	Rabbit
Application	IHC, WB, ELISA
Reactivity	Human, Rat, Mouse

Performance

Conjugation	Unconjugated
Modification	Unmodified
Isotype	IgG
Clonality	Polyclonal
Form	Liquid
Storage	Store at 4°C short term. Aliquot and store at -20°C long term. Avoid freeze/thaw cycles.
Buffer	Liquid in PBS containing 50% glycerol, 0.5% BSA and 0.02% New type preservative N.
Purification	Affinity purification

Immunogen

Gene Name	MRPL39 MRPL39; C21orf92; MRPL5; RPML5; MSTP003; PRED22; 39S ribosomal protein L39;
Alternative Names	mitochondrial; L39mt; MRP-L39; 39S ribosomal protein L5, mitochondrial; L5mt; MRP-L5
Gene ID	54148.0
SwissProt ID	Q9NYK5. The antiserum was produced against synthesized peptide derived from human MRPL39. AA range: 289-338

Application

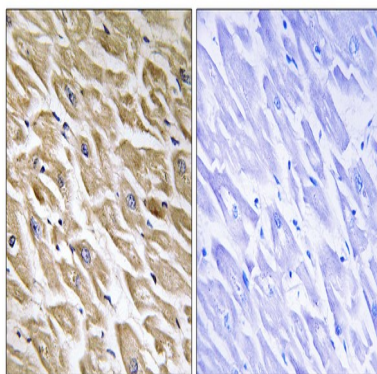
Dilution Ratio	WB 1:500 - 1:2000. IHC 1:100 - 1:300. ELISA: 1:40000..
Molecular Weight	39kD

Background

Mammalian mitochondrial ribosomal proteins are encoded by nuclear genes and help in protein synthesis within the mitochondrion. Mitochondrial ribosomes (mitoribosomes) consist of a small 28S subunit and a large 39S subunit. They have an estimated 75% protein to rRNA composition compared to prokaryotic ribosomes, where this ratio is reversed. Another difference between mammalian mitoribosomes and prokaryotic ribosomes is that the latter contain a 5S rRNA. Among different species, the proteins comprising the mitoribosome differ greatly in sequence, and sometimes in biochemical properties, which prevents easy recognition by sequence homology. This gene encodes a 39S subunit protein. Two transcript variants encoding distinct isoforms have been described. A pseudogene corresponding to this gene is found on chromosome 5q. [provided by RefSeq, Jul 2008], caution: It is uncertain whether Met-1 or Met-6 is the initiator., caution: Ref.1 indicates C21orf8 as a synonym for this orf, this is incorrect, C21orf8 is already assigned to another chromosome 21 region., similarity: To the N-terminal of threonyl-tRNA synthetases., tissue specificity: Ubiquitous (isoform 1); heart-specific (isoform 2),.

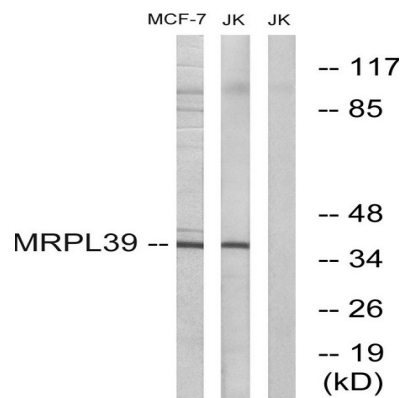
Research Area

Image Data

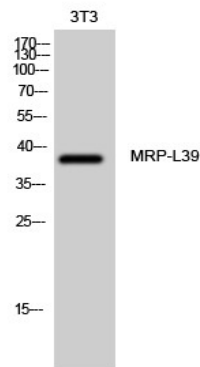


Immunohistochemistry analysis of paraffin-embedded human heart tissue, using MRPL39 Antibody. The picture on the right is blocked with the synthesized peptide.

Product Name: MRP-L39 Rabbit Polyclonal Antibody
Catalog #: APRab14126



Western blot analysis of lysates from Jurkat and MCF-7 cells, using MRPL39 Antibody. The lane on the right is blocked with the synthesized peptide.



Western Blot analysis of 3T3 cells using MRP-L39 Polyclonal Antibody diluted at 1 : 1000

Note

For research use only.