

Summary

Production Name	MRP-L22 Rabbit Polyclonal Antibody
Description	Rabbit Polyclonal Antibody
Host	Rabbit
Application	WB,ELISA
Reactivity	Human,Mouse,Rat

Performance

Conjugation	Unconjugated
Modification	Unmodified
Isotype	IgG
Clonality	Polyclonal
Form	Liquid
Storage	Store at 4°C short term. Aliquot and store at -20°C long term. Avoid freeze/thaw cycles.
Buffer	Liquid in PBS containing 50% glycerol, 0.5% BSA and 0.02% New type preservative N.
Purification	Affinity purification

Immunogen

Gene Name	MRPL22
Alternative Names	MRPL22; MRPL25; RPML25; HSPC158; 39S ribosomal protein L22; mitochondrial; L22mt; MRP-L22; 39S ribosomal protein L25, mitochondrial; L25mt; MRP-L25
Gene ID	29093.0
SwissProt ID	Q9NWU5.The antiserum was produced against synthesized peptide derived from human MRPL22. AA range:91-140

Application

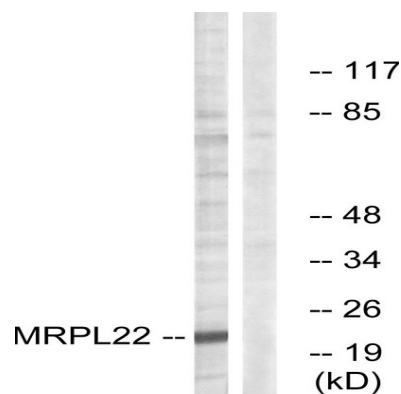
Dilution Ratio	WB 1:500 - 1:2000. ELISA: 1:10000
Molecular Weight	24kD

Background

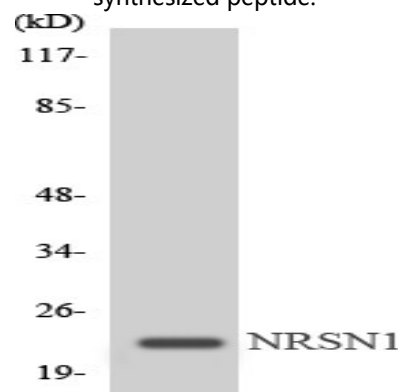
Mammalian mitochondrial ribosomal proteins are encoded by nuclear genes and help in protein synthesis within the mitochondrion. Mitochondrial ribosomes (mitoribosomes) consist of a small 28S subunit and a large 39S subunit. They have an estimated 75% protein to rRNA composition compared to prokaryotic ribosomes, where this ratio is reversed. Another difference between mammalian mitoribosomes and prokaryotic ribosomes is that the latter contain a 5S rRNA. Among different species, the proteins comprising the mitoribosome differ greatly in sequence, and sometimes in biochemical properties, which prevents easy recognition by sequence homology. This gene encodes a 39S subunit protein that belongs to the L22 ribosomal protein family. A pseudogene corresponding to this gene is found on chromosome 4q. Two transcript variants encoding different isoforms have been found for this gene. [providesimilarity:Belongs to the ribosomal protein L22P family.,

Research Area

Image Data



Western blot analysis of lysates from HepG2 cells, using MRPL22 Antibody. The lane on the right is blocked with the synthesized peptide.



Western blot analysis of the lysates from Jurkat cells using MRPL22 antibody.

Product Name: MRP-L22 Rabbit Polyclonal Antibody
Catalog #: APRab14119



Note

For research use only.