

Summary

Production Name	MRP-L21 Rabbit Polyclonal Antibody
Description	Rabbit Polyclonal Antibody
Host	Rabbit
Application	IHC,WB,
Reactivity	Human,Mouse

Performance

Conjugation	Unconjugated
Modification	Unmodified
Isotype	IgG
Clonality	Polyclonal
Form	Liquid
Storage	Store at 4°C short term. Aliquot and store at -20°C long term. Avoid freeze/thaw cycles.
Buffer	Liquid in PBS containing 50% glycerol, 0.5% BSA and 0.02% New type preservative N.
Purification	Affinity purification

Immunogen

Gene Name	MRPL21
Alternative Names	MRPL21; 39S ribosomal protein L21; mitochondrial; L21mt; MRP-L21
Gene ID	219927.0
SwissProt ID	Q7Z2W9.The antiserum was produced against synthesized peptide derived from human MRPL21. AA range:131-180

Application

Dilution Ratio	WB 1:500 - 1:2000. IHC 1:100 - 1:300. ELISA: 1:40000..
Molecular Weight	23kD

Background

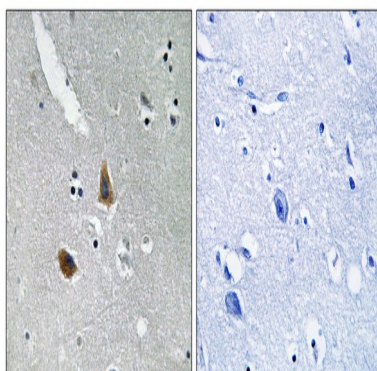
Product Name: MRP-L21 Rabbit Polyclonal Antibody
Catalog #: APRab14118



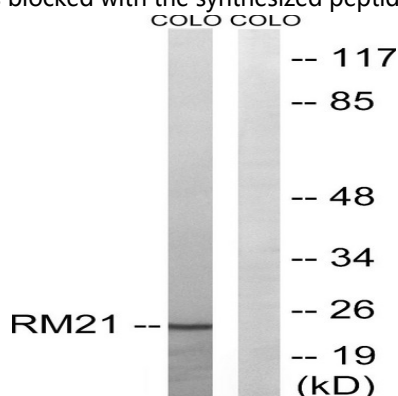
Mammalian mitochondrial ribosomal proteins are encoded by nuclear genes and help in protein synthesis within the mitochondrion. Mitochondrial ribosomes (mitoribosomes) consist of a small 28S subunit and a large 39S subunit. They have an estimated 75% protein to rRNA composition compared to prokaryotic ribosomes, where this ratio is reversed. Another difference between mammalian mitoribosomes and prokaryotic ribosomes is that the latter contain a 5S rRNA. Among different species, the proteins comprising the mitoribosome differ greatly in sequence, and sometimes in biochemical properties, which prevents easy recognition by sequence homology. This gene encodes a 39S subunit protein. Multiple transcript variants encoding different isoforms were identified through sequence analysis although some may be subject to nonsense-mediated decay (NMD). [provided by RefSeq, Jul 2008], similarity: Belongs to the ribosomal protein L21P family.,

Research Area

Image Data

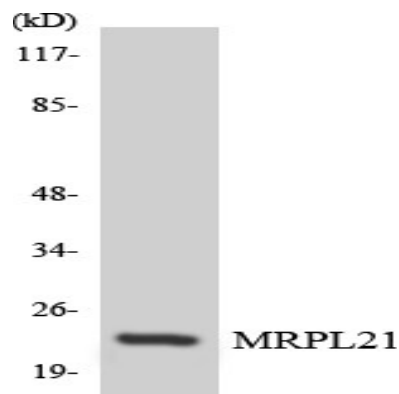


Immunohistochemistry analysis of paraffin-embedded human brain tissue, using MRPL21 Antibody. The picture on the right is blocked with the synthesized peptide.



Western blot analysis of lysates from COLO cells, using MRPL21 Antibody. The lane on the right is blocked with the synthesized peptide.

Product Name: MRP-L21 Rabbit Polyclonal Antibody
Catalog #: APRab14118



Western blot analysis of the lysates from HeLa cells using MRPL21 antibody.



Western Blot analysis of various cells using MRP-L21 Polyclonal Antibody diluted at 1: 2000

Note

For research use only.