

---

## Summary

|                        |                                    |
|------------------------|------------------------------------|
| <b>Production Name</b> | MRP-L18 Rabbit Polyclonal Antibody |
| <b>Description</b>     | Rabbit Polyclonal Antibody         |
| <b>Host</b>            | Rabbit                             |
| <b>Application</b>     | WB,ELISA                           |
| <b>Reactivity</b>      | Human,Rat,Mouse                    |

## Performance

|                     |  |
|---------------------|--|
| <b>Conjugation</b>  | Unconjugated   |
| <b>Modification</b> | Unmodified   |
| <b>Isotype</b>      | IgG  |
| <b>Clonality</b>    | Polyclonal   |
| <b>Form</b>         | Liquid   |
| <b>Storage</b>      | Store at 4°C short term. Aliquot and store at -20°C long term. Avoid freeze/thaw cycles. |
| <b>Buffer</b>       | Liquid in PBS containing 50% glycerol, 0.5% BSA and 0.02% New type preservative N.       |
| <b>Purification</b> | Affinity purification  |

## Immunogen

|                          |  |
|--------------------------|--|
| <b>Gene Name</b>         | MRPL18   |
| <b>Alternative Names</b> | MRPL18; HSPC071; 39S ribosomal protein L18; mitochondrial; L18mt; MRP-L18                              |
| <b>Gene ID</b>           | 29074.0  |
| <b>SwissProt ID</b>      | Q9H0U6.The antiserum was produced against synthesized peptide derived from human MRPL18. AA range:1-50 |

## Application

|                         |                                     |
|-------------------------|-------------------------------------|
| <b>Dilution Ratio</b>   | WB 1:500 - 1:2000. ELISA: 1:20000.. |
| <b>Molecular Weight</b> | 21kD                                |

## Background

---

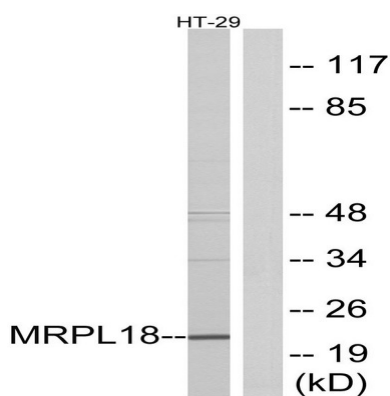
**Product Name: MRP-L18 Rabbit Polyclonal Antibody**  
**Catalog #: APRab14116**



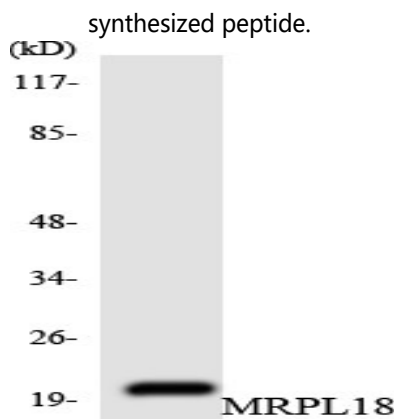
This nuclear gene encodes a protein component of the larger 39S subunit of mitochondrial ribosome. This protein may also aid in the import of nuclear-encoded 5S rRNA into mitochondria. Alternative splicing results in multiple transcript variants, most of which are not predicted to encode a protein. A pseudogene of this gene is found on chromosome 16. [provided by RefSeq, Jan 2016],similarity:Belongs to the ribosomal protein L18P family.,

## Research Area

## Image Data

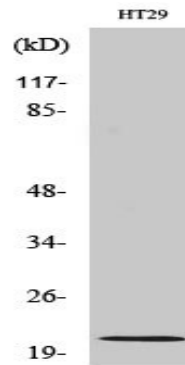


Western blot analysis of lysates from HT-29 cells, using MRPL18 Antibody. The lane on the right is blocked with the synthesized peptide.



Western blot analysis of the lysates from HUVEC cells using MRPL18 antibody.

**Product Name: MRP-L18 Rabbit Polyclonal Antibody**  
**Catalog #: APRab14116**



Western Blot analysis of various cells using MRP-L18 Polyclonal Antibody diluted at 1: 1000

**Note**

For research use only.