
Summary

Production Name	MRP-L15 Rabbit Polyclonal Antibody
Description	Rabbit Polyclonal Antibody
Host	Rabbit
Application	WB,IHC,ELISA
Reactivity	Human,Mouse

Performance

Conjugation	Unconjugated
Modification	Unmodified
Isotype	IgG
Clonality	Polyclonal
Form	Liquid
Storage	Store at 4°C short term. Aliquot and store at -20°C long term. Avoid freeze/thaw cycles.
Buffer	Liquid in PBS containing 50% glycerol, 0.5% BSA and 0.02% New type preservative N.
Purification	Affinity purification

Immunogen

Gene Name	MRPL15
Alternative Names	MRPL15; HSPC145; 39S ribosomal protein L15; mitochondrial; L15mt; MRP-L15
Gene ID	29088.0
SwissProt ID	Q9P015.The antiserum was produced against synthesized peptide derived from human MRPL15. AA range:191-240

Application

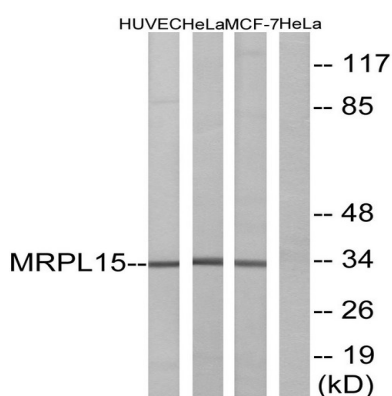
Dilution Ratio	WB 1:500 - 1:2000. IHC 1:100 - 1:300. . ELISA: 1:40000. Not yet tested in other applications.
Molecular Weight	33kD

Background

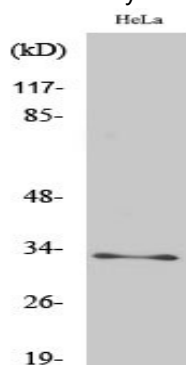
Mammalian mitochondrial ribosomal proteins are encoded by nuclear genes and help in protein synthesis within the mitochondrion. Mitochondrial ribosomes (mitoribosomes) consist of a small 28S subunit and a large 39S subunit. They have an estimated 75% protein to rRNA composition compared to prokaryotic ribosomes, where this ratio is reversed. Another difference between mammalian mitoribosomes and prokaryotic ribosomes is that the latter contain a 5S rRNA. Among different species, the proteins comprising the mitoribosome differ greatly in sequence, and sometimes in biochemical properties, which prevents easy recognition by sequence homology. This gene encodes a 39S subunit protein that belongs to the EcoL15 ribosomal protein family. A pseudogene corresponding to this gene is found on chromosome 15q. [provided by RefSeq, Jul 2008],similarity:Belongs to the ribosomal protein L15P family.,

Research Area

Image Data

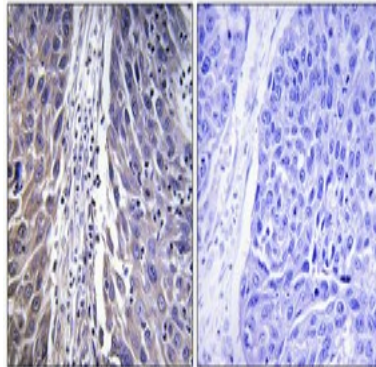


Western blot analysis of lysates from HeLa, HUVEC, and MCF-7 cells, using MRPL15 Antibody. The lane on the right is blocked with the synthesized peptide.



Western Blot analysis of various cells using MRP-L15 Polyclonal Antibody

Product Name: MRP-L15 Rabbit Polyclonal Antibody
Catalog #: APRab14113



Immunohistochemical analysis of paraffin-embedded Human lung cancer. Antibody was diluted at 1:100 (4°,overnight) . High-pressure and temperature Tris-EDTA,pH8.0 was used for antigen retrieval. Negetive contrl (right) obtaned from antibody was pre-absorbed by immunogen peptide.

Note

For research use only.