

Summary

| | |
|------------------------|------------------------------------|
| Production Name | MRP-L14 Rabbit Polyclonal Antibody |
| Description | Rabbit Polyclonal Antibody |
| Host | Rabbit |
| Application | WB,ELISA |
| Reactivity | Human,Mouse,Rat |

Performance

| | |
|---------------------|--|
| Conjugation | Unconjugated |
| Modification | Unmodified |
| Isotype | IgG |
| Clonality | Polyclonal |
| Form | Liquid |
| Storage | Store at 4°C short term. Aliquot and store at -20°C long term. Avoid freeze/thaw cycles. |
| Buffer | Liquid in PBS containing 50% glycerol, 0.5% BSA and 0.02% New type preservative N. |
| Purification | Affinity purification |

Immunogen

| | |
|--------------------------|--|
| Gene Name | MRPL14 |
| Alternative Names | MRPL14; MRPL32; RPML32; 39S ribosomal protein L14; mitochondrial; L14mt; MRP-L14; 39S ribosomal protein L32, mitochondrial; L32mt; MRP-L32 |
| Gene ID | 64928.0 |
| SwissProt ID | Q6P1L8.The antiserum was produced against synthesized peptide derived from human MRPL14. AA range:96-145 |

Application

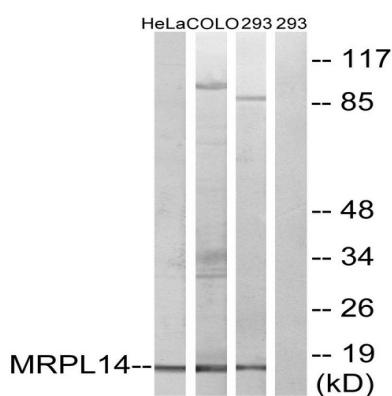
| | |
|-------------------------|-------------------------------------|
| Dilution Ratio | WB 1:500 - 1:2000. ELISA: 1:20000.. |
| Molecular Weight | 16kD |

Background

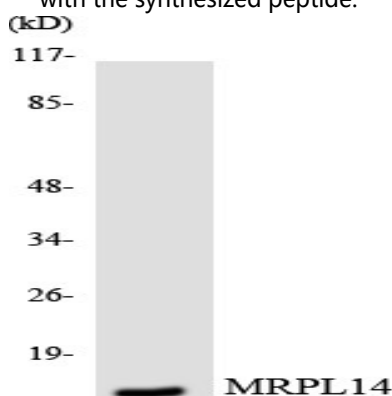
This nuclear gene encodes a protein component of the 39S subunit of the mitochondrial ribosome. A pseudogene of this gene is found on chromosome 17. [provided by RefSeq, Jan 2016],similarity:Belongs to the ribosomal protein L14P family.,

Research Area

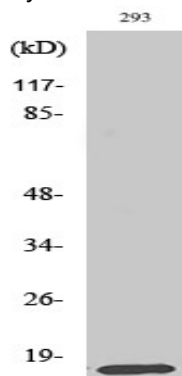
Image Data



Western blot analysis of lysates from 293, HeLa, and COLO cells, using MRPL14 Antibody. The lane on the right is blocked with the synthesized peptide.



Western blot analysis of the lysates from HUVEC cells using MRPL14 antibody.



Product Name: MRP-L14 Rabbit Polyclonal Antibody
Catalog #: APRab14112



Western Blot analysis of various cells using MRP-L14 Polyclonal Antibody diluted at 1: 2000

Note

For research use only.