
Summary

Production Name	MRP-L11 Rabbit Polyclonal Antibody
Description	Rabbit Polyclonal Antibody
Host	Rabbit
Application	IF,IHC,WB,
Reactivity	Human,Monkey

Performance

Conjugation	Unconjugated
Modification	Unmodified
Isotype	IgG
Clonality	Polyclonal
Form	Liquid
Storage	Store at 4°C short term. Aliquot and store at -20°C long term. Avoid freeze/thaw cycles.
Buffer	Liquid in PBS containing 50% glycerol, 0.5% BSA and 0.02% New type preservative N.
Purification	Affinity purification

Immunogen

Gene Name	MRPL11
Alternative Names	MRPL11; CGI-113; 39S ribosomal protein L11; mitochondrial; L11mt; MRP-L11
Gene ID	65003.0
SwissProt ID	Q9Y3B7.The antiserum was produced against synthesized peptide derived from human MRPL11. AA range:21-70

Application

Dilution Ratio	WB 1:500 - 1:2000 IHC 1:100 - 1:300. IF 1:200 - 1:1000. ELISA: 1:40000. Not yet tested in other applications.
Molecular Weight	21kD

Product Name: MRP-L11 Rabbit Polyclonal Antibody
Catalog #: APRab14109

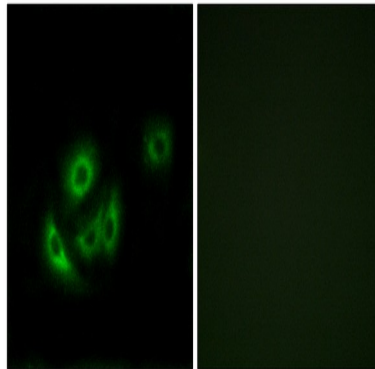


Background

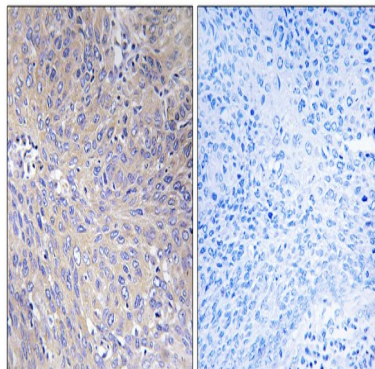
This nuclear gene encodes a 39S subunit component of the mitochondrial ribosome. Alternative splicing results in multiple transcript variants. Pseudogenes for this gene are found on chromosomes 5 and 12. [provided by RefSeq, May 2014],similarity:Belongs to the ribosomal protein L11P family.,

Research Area

Image Data

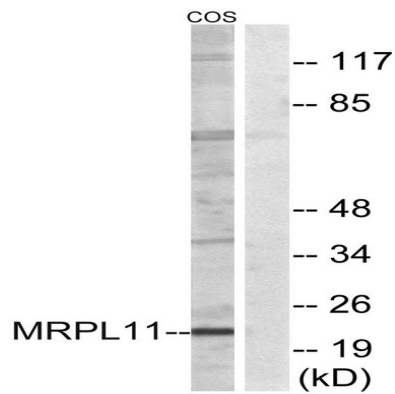


Immunofluorescence analysis of A549 cells, using MRPL11 Antibody. The picture on the right is blocked with the synthesized peptide.



Immunohistochemistry analysis of paraffin-embedded human cervix carcinoma tissue, using MRPL11 Antibody. The picture on the right is blocked with the synthesized peptide.

Product Name: MRP-L11 Rabbit Polyclonal Antibody
Catalog #: APRab14109



Western blot analysis of lysates from COS cells, using MRPL11 Antibody. The lane on the right is blocked with the synthesized peptide.



Western Blot analysis of various cells using MRP-L11 Polyclonal Antibody diluted at 1: 500

Note

For research use only.