

Summary

Production Name	MRP-L10 Rabbit Polyclonal Antibody
Description	Rabbit Polyclonal Antibody
Host	Rabbit
Application	WB,
Reactivity	Human,Rat,Mouse

Performance

Conjugation	Unconjugated
Modification	Unmodified
Isotype	IgG
Clonality	Polyclonal
Form	Liquid
Storage	Store at 4°C short term. Aliquot and store at -20°C long term. Avoid freeze/thaw cycles.
Buffer	Liquid in PBS containing 50% glycerol, 0.5% BSA and 0.02% New type preservative N.
Purification	Affinity purification

Immunogen

Gene Name	MRPL10
Alternative Names	MRPL10; MRPL8; RPML8; 39S ribosomal protein L10; mitochondrial; L10mt; MRP-L10; 39S ribosomal protein L8, mitochondrial; L8mt; MRP-L8
Gene ID	124995.0
SwissProt ID	Q7Z7H8.The antiserum was produced against synthesized peptide derived from human MRPL10. AA range:211-260

Application

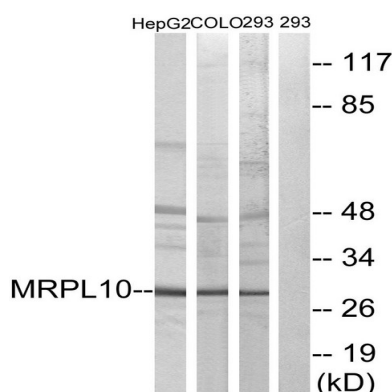
Dilution Ratio	WB 1:500 - 1:2000. ELISA: 1:20000..
Molecular Weight	29kD

Background

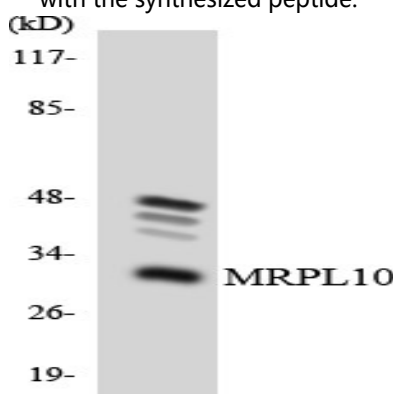
Mammalian mitochondrial ribosomal proteins are encoded by nuclear genes and help in protein synthesis within the mitochondrion. Mitochondrial ribosomes (mitoribosomes) consist of a small 28S subunit and a large 39S subunit. They have an estimated 75% protein to rRNA composition compared to prokaryotic ribosomes, where this ratio is reversed. Another difference between mammalian mitoribosomes and prokaryotic ribosomes is that the latter contain a 5S rRNA. Among different species, the proteins comprising the mitoribosome differ greatly in sequence, and sometimes in biochemical properties, which prevents easy recognition by sequence homology. This gene encodes a 39S subunit protein. Sequence analysis identified three transcript variants that encode two different isoforms. A pseudogene corresponding to this gene is found on chromosome 5q. [provided by RefSeq, Nov 2010],similarity:Belongs to the ribosomal protein L10P family.,subunit:Component of the mitochondrial ribosome large subunit (39S) which comprises a 16S rRNA and about 50 distinct proteins.,

Research Area

Image Data



Western blot analysis of lysates from 293, HepG2, and COLO cells, using MRPL10 Antibody. The lane on the right is blocked with the synthesized peptide.

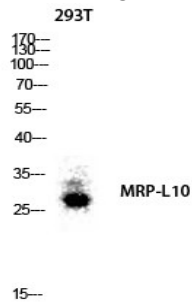


Western blot analysis of the lysates from HT-29 cells using MRPL10 antibody.

Product Name: MRP-L10 Rabbit Polyclonal Antibody
Catalog #: APRab14108



Western Blot analysis of various cells using MRP-L10 Polyclonal Antibody diluted at 1: 1000



Western blot analysis of 293T lysis using MRP-L10 antibody. Antibody was diluted at 1:1000

Note

For research use only.