

Summary

Production Name	MRGX3 Rabbit Polyclonal Antibody
Description	Rabbit Polyclonal Antibody
Host	Rabbit
Application	IF, WB,
Reactivity	Human, Rat, Mouse

Performance

Conjugation	Unconjugated
Modification	Unmodified
Isotype	IgG
Clonality	Polyclonal
Form	Liquid
Storage	Store at 4°C short term. Aliquot and store at -20°C long term. Avoid freeze/thaw cycles.
Buffer	Liquid in PBS containing 50% glycerol, 0.5% BSA and 0.02% New type preservative N.
Purification	Affinity purification

Immunogen

Gene Name	MRGPRX3
Alternative Names	MRGPRX3; MRGX3; SNSR1; SNSR2; Mas-related G-protein coupled receptor member X3; Sensory neuron-specific G-protein coupled receptor 1/2
Gene ID	117195.0
SwissProt ID	Q96LB0. The antiserum was produced against synthesized peptide derived from human MRGX3. AA range:99-148

Application

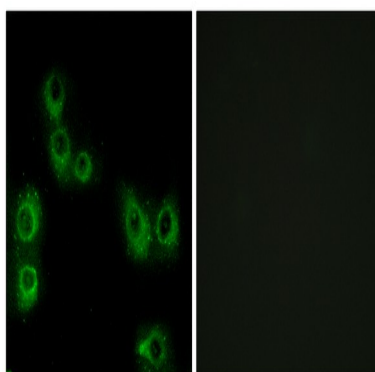
Dilution Ratio	WB 1:500-2000; IF ICC 1:100-500; ELISA 2000-20000
Molecular Weight	34kD

Background

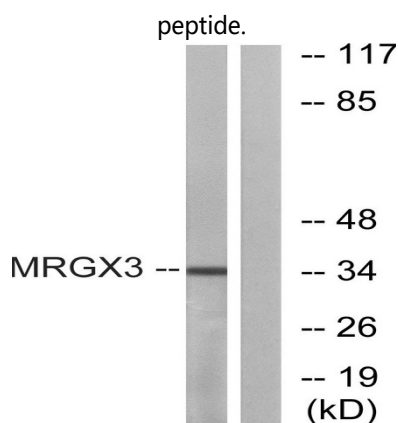
This gene encodes a member of the mas-related/sensory neuron specific subfamily of G protein coupled receptors. The encoded protein may be involved in sensory neuron regulation and in the modulation of pain. [provided by RefSeq, Oct 2009],function:Orphan receptor. Probably involved in the function of nociceptive neurons. May regulate nociceptor function and/or development, including the sensation or modulation of pain. Potently activated by enkephalins.,similarity:Belongs to the G-protein coupled receptor 1 family. Mas subfamily.,tissue specificity:Uniquely localized in a subset of small dorsal root and trigeminal sensory neurons.,

Research Area

Image Data

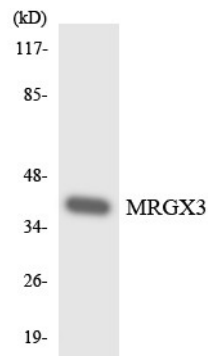


Immunofluorescence analysis of MCF7 cells, using MRGX3 Antibody. The picture on the right is blocked with the synthesized

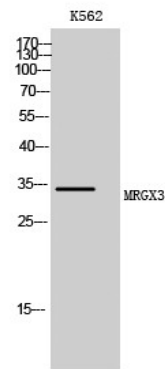


Western blot analysis of lysates from K562 cells, using MRGX3 Antibody. The lane on the right is blocked with the synthesized peptide.

Product Name: MRGX3 Rabbit Polyclonal Antibody
Catalog #: APRab14092



Western blot analysis of the lysates from 293 cells using MRGX3 antibody.



Western Blot analysis of K562 cells using MRGX3 Polyclonal Antibody

Note

For research use only.