

Summary

| | |
|------------------------|----------------------------------|
| Production Name | MRG15 Rabbit Polyclonal Antibody |
| Description | Rabbit Polyclonal Antibody |
| Host | Rabbit |
| Application | WB,IHC,IF,ELISA |
| Reactivity | Human,Mouse |

Performance

| | |
|---------------------|--|
| Conjugation | Unconjugated |
| Modification | Unmodified |
| Isotype | IgG |
| Clonality | Polyclonal |
| Form | Liquid |
| Storage | Store at 4°C short term. Aliquot and store at -20°C long term. Avoid freeze/thaw cycles. |
| Buffer | Liquid in PBS containing 50% glycerol, 0.5% BSA and 0.02% New type preservative N. |
| Purification | Affinity purification |

Immunogen

| | |
|--------------------------|--|
| Gene Name | MORF4L1 MORF4L1; MRG15; FWP006; HSPC008; HSPC061; PP368; Mortality factor 4-like protein 1; MORF-related gene 15 protein; Protein MSL3-1; Transcription factor-like protein |
| Alternative Names | MRG15 |
| Gene ID | 10933.0 |
| SwissProt ID | Q9UBU8.The antiserum was produced against synthesized peptide derived from human MORF4L1. AA range:31-80 |

Application

| | |
|-----------------------|--|
| Dilution Ratio | WB 1:500 - 1:2000. IHC 1:100 - 1:300. IF 1:200 - 1:1000. ELISA: 1:20000. Not yet tested in other applications. |
|-----------------------|--|

Molecular Weight 41kD

Background

function:Component of the NuA4 histone acetyltransferase (HAT) complex which is involved in transcriptional activation of select genes principally by acetylation of nucleosomal histones H4 and H2A. This modification may both alter nucleosome - DNA interactions and promote interaction of the modified histones with other proteins which positively regulate transcription. This complex may be required for the activation of transcriptional programs associated with oncogene and proto-oncogene mediated growth induction, tumor suppressor mediated growth arrest and replicative senescence, apoptosis, and DNA repair. The NuA4 complex ATPase and helicase activities seem to be, at least in part, contributed by the association of RUVBL1 and RUVBL2 with EP400. NuA4 may also play a direct role in DNA repair when directly recruited to sites of DNA damage. Also component of the mSin3A complex which acts to repress transcription by deacetylation of nucleosomal histones.,similarity:Belongs to the MRG family.,subunit:Component of the NuA4 histone acetyltransferase complex which contains the catalytic subunit HTATIP/TIP60 and the subunits EP400, TRRAP/PAF400, BRD8/SMAP, EPC1, DMAP1/DNMAP1, RUVBL1/TIP49, RUVBL2, ING3, actin, ACTL6A/BAF53A, MORF4L1/MRG15, MORF4L2/MRGX, MRGBP, YEATS4/GAS41, VPS72/YL1 and EAF6. The NuA4 complex interacts with MYC and the adenovirus E1A protein. MORF4L1 may also participate in the formation of NuA4 related complexes which lack the HTATIP/TIP60 catalytic subunit, but which include the SWI/SNF related protein SRCAP. Component of the mSin3A histone deacetylase complex, which includes SIN3A, HDAC2, ARID4B, MORF4L1, RBBP4/RbAp48, and RBBP7/RbAp46. MORF4L1 interacts with RB1 and MYST1. MORF4L1 may also interact with PHF12 and one or more as yet undefined members of the TLE (transducin-like enhancer of split) family of transcriptional repressors. Interacts with the N-terminus of MRFAP1. Found in a complex composed of MORF4L1, MRFAP1 and RB1.,function:Component of the NuA4 histone acetyltransferase (HAT) complex which is involved in transcriptional activation of select genes principally by acetylation of nucleosomal histones H4 and H2A. This modification may both alter nucleosome - DNA interactions and promote interaction of the modified histones with other proteins which positively regulate transcription. This complex may be required for the activation of transcriptional programs associated with oncogene and proto-oncogene mediated growth induction, tumor suppressor mediated growth arrest and replicative senescence, apoptosis, and DNA repair. The NuA4 complex ATPase and helicase activities seem to be, at least in part, contributed by the association of RUVBL1 and RUVBL2 with EP400. NuA4 may also play a direct role in DNA repair when directly recruited to sites of DNA damage. Also component of the mSin3A complex which acts to repress transcription by deacetylation of nucleosomal histones.,similarity:Belongs to the MRG family.,subunit:Component of the NuA4 histone acetyltransferase complex which contains the catalytic subunit HTATIP/TIP60 and the subunits EP400, TRRAP/PAF400, BRD8/SMAP, EPC1, DMAP1/DNMAP1, RUVBL1/TIP49, RUVBL2, ING3, actin, ACTL6A/BAF53A, MORF4L1/MRG15, MORF4L2/MRGX, MRGBP, YEATS4/GAS41, VPS72/YL1 and EAF6. The NuA4 complex interacts with MYC and the adenovirus E1A protein. MORF4L1 may also participate in the formation of NuA4 related complexes which lack the HTATIP/TIP60 catalytic subunit, but which include the SWI/SNF related protein SRCAP. Component of the mSin3A histone deacetylase complex, which includes SIN3A, HDAC2, ARID4B, MORF4L1, RBBP4/RbAp48, and RBBP7/RbAp46. MORF4L1

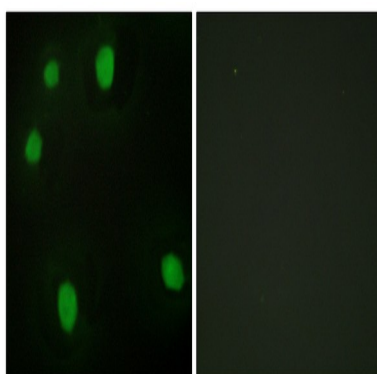
Product Name: MRG15 Rabbit Polyclonal Antibody
Catalog #: APRab14085



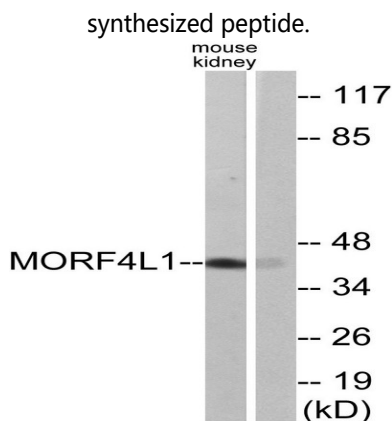
interacts with RB1 and MYST1. MORF4L1 may also interact with PHF12 and one or more as yet undefined members of the TLE (transducin-like enhancer of split) family of transcriptional repressors. Interacts with the N-terminus of MRFAP1. Found in a complex composed of MORF4L1, MRFAP1 and RB1.,

Research Area

Image Data

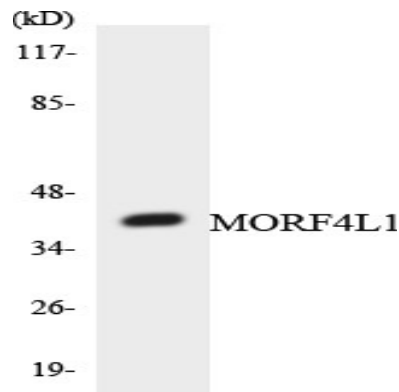


Immunofluorescence analysis of HepG2 cells, using MORF4L1 Antibody. The picture on the right is blocked with the synthesized peptide.

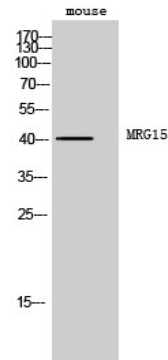


Western blot analysis of lysates from mouse kidney cells, using MORF4L1 Antibody. The lane on the right is blocked with the synthesized peptide.

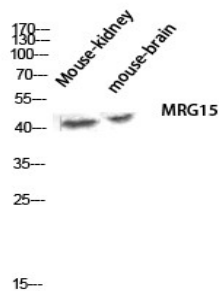
Product Name: MRG15 Rabbit Polyclonal Antibody
Catalog #: APRab14085



Western blot analysis of the lysates from COLO205 cells using MORF4L1 antibody.

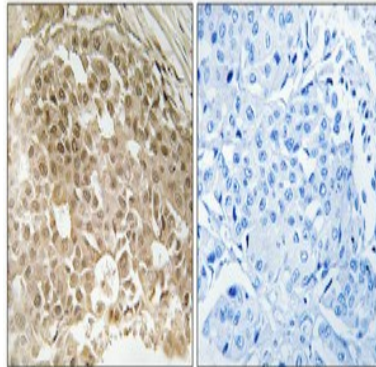


Western Blot analysis of mouse cells using MRG15 Polyclonal Antibody diluted at 1 : 500 cells nucleus extracted by Minute TM Cytoplasmic and Nuclear Fractionation kit (SC-003, Inventbiotech, MN, USA) .



Western blot analysis of Mouse-kidney mouse-brain lysis using MRG15 antibody. Antibody was diluted at 1:500 cells nucleus extracted by Minute TM Cytoplasmic and Nuclear Fractionation kit (SC-003, Inventbiotech, MN, USA) .

Product Name: MRG15 Rabbit Polyclonal Antibody
Catalog #: APRab14085



Immunohistochemical analysis of paraffin-embedded Human breast cancer. Antibody was diluted at 1:100 (4°, overnight) . High-pressure and temperature Tris-EDTA, pH 8.0 was used for antigen retrieval. Negative control (right) obtained from antibody was pre-absorbed by immunogen peptide.

Note

For research use only.