

Product Name: mPRy Rabbit Polyclonal Antibody
Catalog #: APRab14070



Summary

Production Name	mPRy Rabbit Polyclonal Antibody
Description	Rabbit Polyclonal Antibody
Host	Rabbit
Application	WB
Reactivity	Human,Mouse,Rat

Performance

Conjugation	Unconjugated
Modification	Unmodified
Isotype	IgG
Clonality	Polyclonal
Form	Liquid
Storage	Store at 4°C short term. Aliquot and store at -20°C long term. Avoid freeze/thaw cycles.
Buffer	Liquid in PBS containing 50% glycerol, 0.5% BSA and 0.02% New type preservative N.
Purification	Affinity purification

Immunogen

Gene Name	PAQR5
Alternative Names	PAQR5; MPRG; Membrane progesterin receptor gamma; mPR gamma; Progesterin and adiponQ receptor family member 5; Progesterin and adiponQ receptor family member V
Gene ID	54852.0
SwissProt ID	Q9NXK6.The antiserum was produced against synthesized peptide derived from human MPRG. AA range:281-330

Application

Dilution Ratio	WB 1:500-2000 ELISA 2000-20000
Molecular Weight	38kD

Background

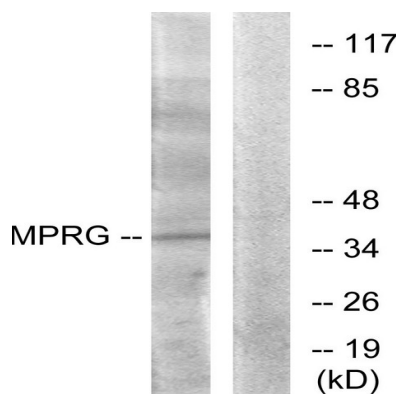
Product Name: mPRy Rabbit Polyclonal Antibody
Catalog #: APRab14070



function: Steroid membrane receptor. Binds progesterone. May be involved in oocyte maturation., similarity: Belongs to the ADIPOR family., tissue specificity: Expressed in the kidney, colon, adrenal and lung., function: Steroid membrane receptor. Binds progesterone. May be involved in oocyte maturation., similarity: Belongs to the ADIPOR family., tissue specificity: Expressed in the kidney, colon, adrenal and lung.,

Research Area

Image Data



Western blot analysis of lysates from HUVEC cells, using MPRG Antibody. The lane on the right is blocked with the synthesized peptide.

Note

For research use only.