

Summary

Production Name	MPP10 Rabbit Polyclonal Antibody
Description	Rabbit Polyclonal Antibody
Host	Rabbit
Application	WB
Reactivity	Human,Rat,Mouse

Performance

Conjugation	Unconjugated
Modification	Unmodified
Isotype	IgG
Clonality	Polyclonal
Form	Liquid
Storage	Store at 4°C short term. Aliquot and store at -20°C long term. Avoid freeze/thaw cycles.
Buffer	Liquid in PBS containing 50% glycerol, 0.5% BSA and 0.02% New type preservative N.
Purification	Affinity purification

Immunogen

Gene Name	MPHOSPH10
Alternative Names	MPHOSPH10; MPP10; U3 small nucleolar ribonucleoprotein protein MPP10; M phase phosphoprotein 10
Gene ID	10199.0
SwissProt ID	O00566.Synthesized peptide derived from MPP10 . at AA range: 60-140

Application

Dilution Ratio	WB 1:500-2000; ELISA 2000-20000
Molecular Weight	78kD

Background

This gene encodes a protein that is phosphorylated during mitosis. The protein localizes to the nucleolus during interphase

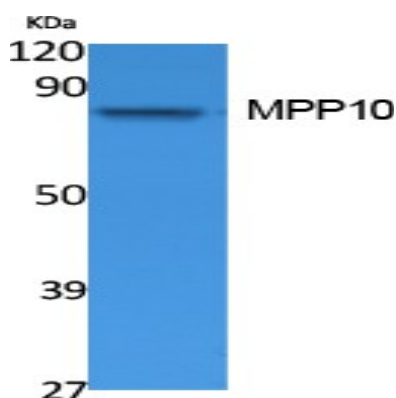
Product Name: MPP10 Rabbit Polyclonal Antibody
Catalog #: APRab14059



and to the chromosomes during M phase. The protein associates with the U3 small nucleolar ribonucleoprotein 60-80S complexes and may be involved in pre-rRNA processing. [provided by RefSeq, Dec 2010],function:Component of the 60-80S U3 small nucleolar ribonucleoprotein (U3 snoRNP). Required for the early cleavages during pre-18S ribosomal RNA processing.,PTM:Phosphorylated in M (mitotic) phase.,similarity:Belongs to the MPP10 family.,subcellular location:Fibrillar region of the nucleolus. After dissolution of the nucleolus in early M phase becomes associated with chromosomes through metaphase and anaphase. In telophase localized to small cellular prenucleolar bodies that not always contain fibrillarin. The reassociation with nucleolus is preceded by the arrival of fibrillarin.,subunit:Component of a heterotrimeric complex containing IMP3, IMP4 and MPHOSPH10. Interacts with IMP3 and IMP4.,

Research Area

Image Data



Western Blot analysis of extracts from Jurkat cells, using MPP10 Polyclonal Antibody.. Secondary antibody was diluted at 1:20000 cells nucleus extracted by Minute TM Cytoplasmic and Nuclear Fractionation kit (SC-003, Invent biotech, MN, USA) .

Note

For research use only.