

Product Name: MPP1 Rabbit Polyclonal Antibody
Catalog #: APRab14058



Summary

Production Name	MPP1 Rabbit Polyclonal Antibody
Description	Rabbit Polyclonal Antibody
Host	Rabbit
Application	WB
Reactivity	Human,Rat,Mouse

Performance

Conjugation	Unconjugated
Modification	Unmodified
Isotype	IgG
Clonality	Polyclonal
Form	Liquid
Storage	Store at 4°C short term. Aliquot and store at -20°C long term. Avoid freeze/thaw cycles.
Buffer	Liquid in PBS containing 50% glycerol, 0.5% BSA and 0.02% New type preservative N.
Purification	Affinity purification

Immunogen

Gene Name	KIF20B
Alternative Names	KIF20B; KRMP1; MPHOSPH1; Kinesin-like protein KIF20B; Cancer/testis antigen 90; CT90; Kinesin-related motor interacting with PIN1; M-phase phosphoprotein 1; MPP1
Gene ID	9585.0
SwissProt ID	Q96Q89.The antiserum was produced against synthesized peptide derived from human KIF20B. AA range:1771-1820

Application

Dilution Ratio	WB 1:500-2000; ELISA 1:5000-20000
Molecular Weight	210kD

Background

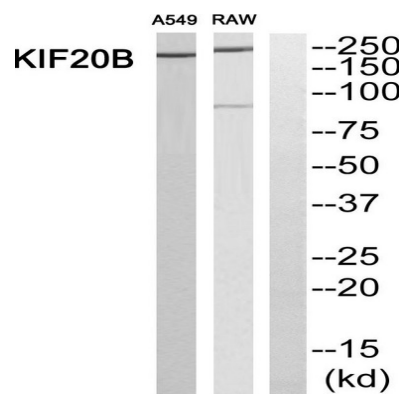
Product Name: MPP1 Rabbit Polyclonal Antibody
Catalog #: APRab14058



KIF20B (Kinesin Family Member 20B) is a Protein Coding gene. Among its related pathways are Golgi-to-ER retrograde transport and Factors involved in megakaryocyte development and platelet production. GO annotations related to this gene include ATPase activity and microtubule motor activity. An important paralog of this gene is KIF23. M phase of mitotic cell cycle, mitotic cell cycle, M phase, nuclear division, microtubule-based process, microtubule-based movement, cell cycle, cell cycle arrest, mitosis, regulation of mitosis, regulation of mitotic cell cycle, regulation of cell cycle process, cell cycle process, cell cycle phase, regulation of organelle organization, organelle fission, cell division, regulation of cell cycle, regulation of nuclear division,

Research Area

Image Data



Western blot analysis of KIF20B Antibody. The lane on the right is blocked with the KIF20B peptide.

Note

For research use only.