

Product Name: MP68 Rabbit Polyclonal Antibody
Catalog #: APRab14052



Summary

Production Name	MP68 Rabbit Polyclonal Antibody
Description	Rabbit Polyclonal Antibody
Host	Rabbit
Application	IHC,ELISA
Reactivity	Human,Mouse

Performance

Conjugation	Unconjugated
Modification	Unmodified
Isotype	IgG
Clonality	Polyclonal
Form	Liquid
Storage	Store at 4°C short term. Aliquot and store at -20°C long term. Avoid freeze/thaw cycles.
Buffer	Liquid in PBS containing 50% glycerol, 0.5% BSA and 0.02% New type preservative N.
Purification	Affinity purification

Immunogen

Gene Name	MP68
Alternative Names	MP68; C14orf2; 6.8 kDa mitochondrial proteolipid
Gene ID	9556.0
SwissProt ID	P56378.The antiserum was produced against synthesized peptide derived from human MP68. AA range:9-58

Application

Dilution Ratio	IHC 1:100-1:300 ELISA: 1:20000
Molecular Weight	

Background

similarity:Belongs to the small mitochondrial proteolipid family.,similarity:Belongs to the small mitochondrial proteolipid

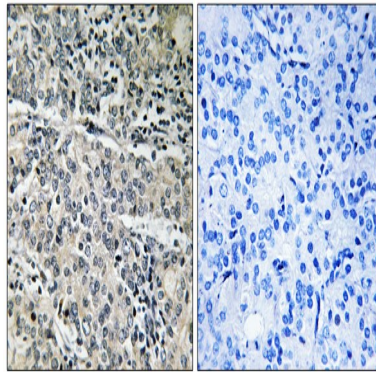
Product Name: MP68 Rabbit Polyclonal Antibody
Catalog #: APRab14052



family.,

Research Area

Image Data



Immunohistochemistry analysis of paraffin-embedded human prostate carcinoma tissue, using MP68 Antibody. The picture on the right is blocked with the synthesized peptide.

Note

For research use only.