

## Summary

<b>Production Name</b>	Mox1 Rabbit Polyclonal Antibody
<b>Description</b>	Rabbit Polyclonal Antibody
<b>Host</b>	Rabbit
<b>Application</b>	WB,IHC,ELISA
<b>Reactivity</b>	Human,Mouse,Rat

## Performance

<b>Conjugation</b>	Unconjugated
<b>Modification</b>	Unmodified
<b>Isotype</b>	IgG
<b>Clonality</b>	Polyclonal
<b>Form</b>	Liquid
<b>Storage</b>	Store at 4°C short term. Aliquot and store at -20°C long term. Avoid freeze/thaw cycles.
<b>Buffer</b>	Liquid in PBS containing 50% glycerol, 0.5% BSA and 0.02% New type preservative N.
<b>Purification</b>	Affinity purification

## Immunogen

<b>Gene Name</b>	NOX1 MOX1 NOH1
<b>Alternative Names</b>	NADPH oxidase 1 (NOX-1;EC 1.-.-.;Mitogenic oxidase 1;MOX-1;NADH/NADPH mitogenic oxidase subunit P65-MOX;NOH-1)
<b>Gene ID</b>	27035.0
<b>SwissProt ID</b>	Q9Y5S8.Synthetic peptide from human protein at AA range: 210-260

## Application

<b>Dilution Ratio</b>	WB 1:500-2000,IHC 1:500-200, ELISA 1:10000-20000.
<b>Molecular Weight</b>	65kD

## Background

**Product Name: Mox1 Rabbit Polyclonal Antibody**  
**Catalog #: APRab14050**

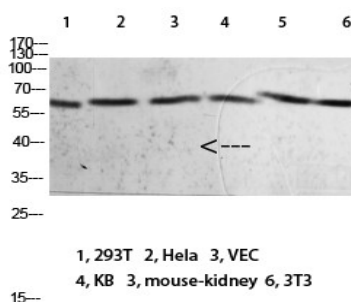


This gene encodes a member of the NADPH oxidase family of enzymes responsible for the catalytic one-electron transfer of oxygen to generate superoxide or hydrogen peroxide. Alternatively spliced transcript variants encoding multiple isoforms have been observed for this gene. [provided by RefSeq, Nov 2012],cofactor:FAD .,cofactor:NADP .,enzyme regulation:The oxidase activity is potentiated by NOXA1 and NOXO1.,function:NOH-1S is a voltage-gated proton channel that mediates the H(+) currents of resting phagocytes and other tissues. It participates in the regulation of cellular pH and is blocked by zinc. NOH-1L is a pyridine nucleotide-dependent oxidoreductase that generates superoxide and might conduct H(+) ions as part of its electron transport mechanism, whereas NOH-1S does not contain an electron transport chain.,similarity:Contains 1 FAD-binding FR-type domain.,similarity:Contains 1 ferric oxidoreductase domain.,subunit:NOX1, NOXA1, NOXO1, RAC1 and CYBA forms a functional multimeric complex supporting ROS production. Interacts with NOXA1 and NOXO1.,tissue specificity:NOH-1L is detected in colon, uterus, prostate, and colon carcinoma, but not in peripheral blood leukocytes. NOH-1S is detected only in colon and colon carcinoma cells.,

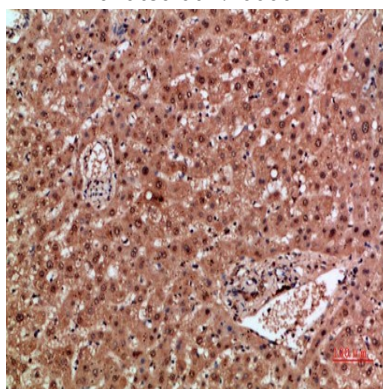
## Research Area

Leukocyte transendothelial migration;

## Image Data

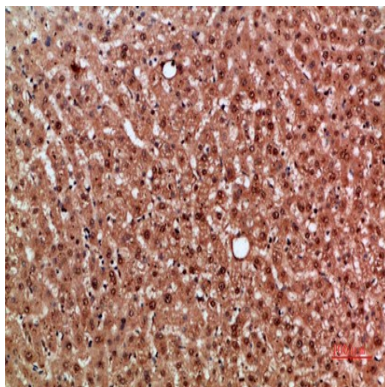


Western blot analysis of 293T HeLa VEC KB mouse-kidney 3T3 lysate, antibody was diluted at 2000. Secondary antibody was diluted at 1:20000

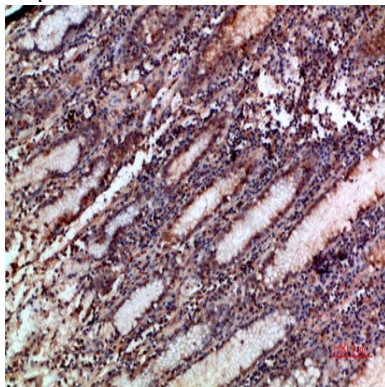


Immunohistochemical analysis of paraffin-embedded human-liver, antibody was diluted at 1:200

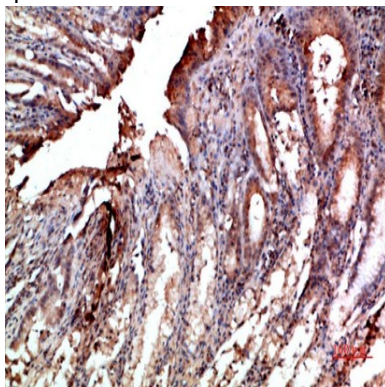
**Product Name: Mox1 Rabbit Polyclonal Antibody**  
**Catalog #: APRab14050**



Immunohistochemical analysis of paraffin-embedded human-liver, antibody was diluted at 1:200



Immunohistochemical analysis of paraffin-embedded human-stomach, antibody was diluted at 1:200



Immunohistochemical analysis of paraffin-embedded human-stomach, antibody was diluted at 1:200

## **Note**

For research use only.