

Summary

Production Name	MOT6 Rabbit Polyclonal Antibody
Description	Rabbit Polyclonal Antibody
Host	Rabbit
Application	WB
Reactivity	Human,Mouse

Performance

Conjugation	Unconjugated
Modification	Unmodified
Isotype	IgG
Clonality	Polyclonal
Form	Liquid
Storage	Store at 4°C short term. Aliquot and store at -20°C long term. Avoid freeze/thaw cycles.
Buffer	Liquid in PBS containing 50% glycerol, and 0.02% New type preservative N.
Purification	Affinity purification

Immunogen

Gene Name	SLC16A5 MCT5 MCT6
Alternative Names	
Gene ID	9121.0
SwissProt ID	O15375.Synthesized peptide derived from human protein . at AA range: 220-300

Application

Dilution Ratio	WB 1:500-2000 ELISA 1:5000-20000
Molecular Weight	55kD

Background

This gene encodes a member of the monocarboxylate transporter family and the major facilitator superfamily. The encoded protein is localized to the cell membrane and acts as a proton-linked transporter of bumetanide. Transport by the encoded

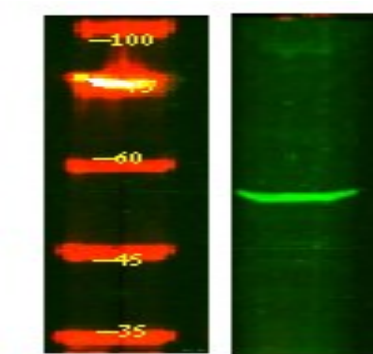
Product Name: MOT6 Rabbit Polyclonal Antibody
Catalog #: APRab14041



protein is inhibited by four loop diuretics, nateglinide, thiazides, probenecid, and glibenclamide. Alternative splicing results in multiple transcript variants. [provided by RefSeq, Nov 2012],function:Proton-linked monocarboxylate transporter. Catalyzes the rapid transport across the plasma membrane of many monocarboxylates such as lactate, pyruvate, branched-chain oxo acids derived from leucine, valine and isoleucine, and the ketone bodies acetoacetate, beta-hydroxybutyrate and acetate.,similarity:Belongs to the major facilitator superfamily. Monocarboxylate porter (TC 2.A.1.13) family.,tissue specificity:Highly expressed in kidney.,

Research Area

Image Data



Western Blot analysis of HEK293 lysis, using primary antibody at 1:1000 dilution. Secondary antibody was diluted at 1:10000

Note

For research use only.