

Product Name: Moesin/Ezrin/Radixin Rabbit Polyclonal Antibody
Catalog #: APRab14022

Summary

Production Name	Moesin/Ezrin/Radixin Rabbit Polyclonal Antibody
Description	Rabbit Polyclonal Antibody
Host	Rabbit
Application	IHC,WB,ELISA
Reactivity	Human,Mouse,Rat

Performance

Conjugation	Unconjugated
Modification	Unmodified
Isotype	IgG
Clonality	Polyclonal
Form	Liquid
Storage	Store at 4°C short term. Aliquot and store at -20°C long term. Avoid freeze/thaw cycles.
Buffer	Liquid in PBS containing 50% glycerol, 0.5% BSA and 0.02% New type preservative N.
Purification	Affinity purification

Immunogen

Gene Name	MSN
Alternative Names	MSN; Moesin; Membrane-organizing extension spike protein; RDX; Radixin; EZR; VIL2; Ezrin; Cytovillin; Villin-2; p81
Gene ID	4478/5962
SwissProt ID	P26038/P35241/P15311.The antiserum was produced against synthesized peptide derived from human Moesin/Ezrin/Radixin. AA range:524-573

Application

Dilution Ratio	WB 1:500 - 1:2000. IHC 1:100 - 1:300. ELISA: 1:20000..
Molecular Weight	67kD

Product Name: Moesin/Ezrin/Radixin Rabbit Polyclonal Antibody
Catalog #: APRab14022



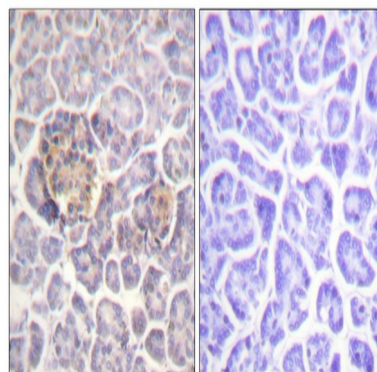
Background

Moesin (for membrane-organizing extension spike protein) is a member of the ERM family which includes ezrin and radixin. ERM proteins appear to function as cross-linkers between plasma membranes and actin-based cytoskeletons. Moesin is localized to filopodia and other membranous protrusions that are important for cell-cell recognition and signaling and for cell movement. [provided by RefSeq, Jul 2008],function:Probably involved in connections of major cytoskeletal structures to the plasma membrane.,PTM:Phosphorylation on Thr-558 is crucial for the formation of microvilli-like structures.,similarity:Contains 1 FERM domain.,subcellular location:Phosphorylated form is enriched in microvilli-like structures at apical membrane.,subunit:In resting T-cells, part of a PAG1-SLC9A3R1-MSN complex which is disrupted upon TCR activation (By similarity). Binds SLC9A3R1.,tissue specificity:In all tissues and cultured cells studied.,

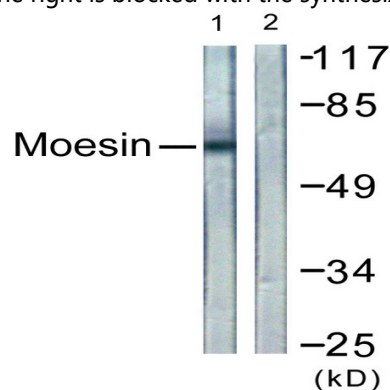
Research Area

Leukocyte transendothelial migration;Regulates Actin and Cytoskeleton;

Image Data



Immunohistochemistry analysis of paraffin-embedded human pancreas tissue, using Moesin/Ezrin/Radixin Antibody. The picture on the right is blocked with the synthesized peptide.

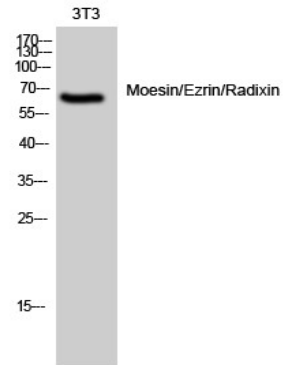


Western blot analysis of lysates from NIH/3T3 cells, using Moesin/Ezrin/Radixin Antibody. The lane on the right is blocked

**Product Name: Moesin/Ezrin/Radixin Rabbit Polyclonal
Antibody**
Catalog #: APRab14022



with the synthesized peptide.



Western Blot analysis of 3T3 cells using Moesin/Ezrin/Radixin Polyclonal Antibody diluted at 1 : 2000

Note

For research use only.