
Summary

Production Name	Mob3C Rabbit Polyclonal Antibody
Description	Rabbit Polyclonal Antibody
Host	Rabbit
Application	WB,IHC,ELISA
Reactivity	Human,Mouse

Performance

Conjugation	Unconjugated
Modification	Unmodified
Isotype	IgG
Clonality	Polyclonal
Form	Liquid
Storage	Store at 4°C short term. Aliquot and store at -20°C long term. Avoid freeze/thaw cycles.
Buffer	Liquid in PBS containing 50% glycerol, 0.5% BSA and 0.02% New type preservative N.
Purification	Affinity purification

Immunogen

Gene Name	MOB3C
Alternative Names	MOB3C; MOBKL2C; MOB kinase activator 3C; Mob1 homolog 2C; Mps one binder kinase activator-like 2C
Gene ID	148932.0
SwissProt ID	Q70IA8.The antiserum was produced against synthesized peptide derived from human MOL2C. AA range:81-130

Application

Dilution Ratio	WB 1:500 - 1:2000. IHC 1:100 - 1:300. ELISA: 1:40000..
Molecular Weight	22kD

Product Name: Mob3C Rabbit Polyclonal Antibody
Catalog #: APRab14017

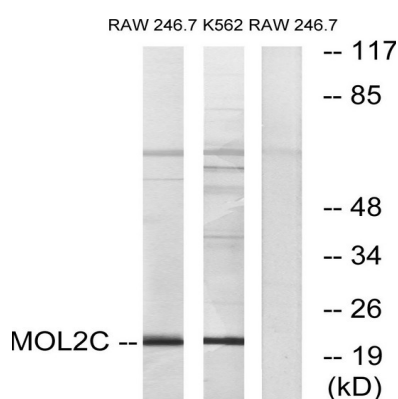


Background

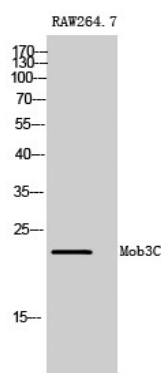
The protein encoded by this gene is similar to the yeast Mob1 protein. Yeast Mob1 binds Mps1p, a protein kinase essential for spindle pole body duplication and mitotic checkpoint regulation. Alternatively spliced transcript variants encoding distinct isoforms have been observed. [provided by RefSeq, Jul 2008],function:May regulate the activity of kinases.,similarity:Belongs to the MOB1/phocein family.,

Research Area

Image Data

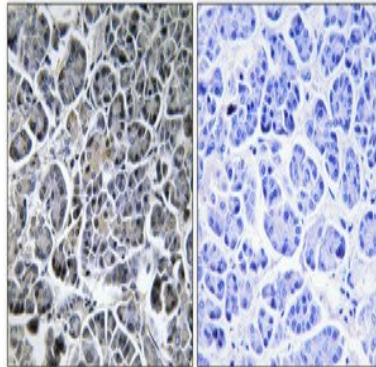


Western blot analysis of lysates from RAW264.7 and K562 cells, using MOL2C Antibody. The lane on the right is blocked with the synthesized peptide.



Western Blot analysis of RAW264.7 cells using Mob3C Polyclonal Antibody

Product Name: Mob3C Rabbit Polyclonal Antibody
Catalog #: APRab14017



Immunohistochemical analysis of paraffin-embedded Human pancreas. Antibody was diluted at 1:100 (4°,overnight) . High-pressure and temperature Tris-EDTA,pH8.0 was used for antigen retrieval. Negative contrl (right) obtaned from antibody was pre-absorbed by immunogen peptide.

Note

For research use only.