

## Summary

<b>Production Name</b>	Mob3B Rabbit Polyclonal Antibody
<b>Description</b>	Rabbit Polyclonal Antibody
<b>Host</b>	Rabbit
<b>Application</b>	WB,IHC,ELISA
<b>Reactivity</b>	Human,Mouse

## Performance

<b>Conjugation</b>	Unconjugated
<b>Modification</b>	Unmodified
<b>Isotype</b>	IgG
<b>Clonality</b>	Polyclonal
<b>Form</b>	Liquid
<b>Storage</b>	Store at 4°C short term. Aliquot and store at -20°C long term. Avoid freeze/thaw cycles.
<b>Buffer</b>	Liquid in PBS containing 50% glycerol, 0.5% BSA and 0.02% New type preservative N.
<b>Purification</b>	Affinity purification

## Immunogen

<b>Gene Name</b>	MOB3B
<b>Alternative Names</b>	MOB3B; MOBKL2B; MOB kinase activator 3B; Mob1 homolog 2b; Mps one binder kinase activator-like 2B
<b>Gene ID</b>	79817.0
<b>SwissProt ID</b>	Q86TA1.The antiserum was produced against synthesized peptide derived from human MOBKL2B. AA range:71-120

## Application

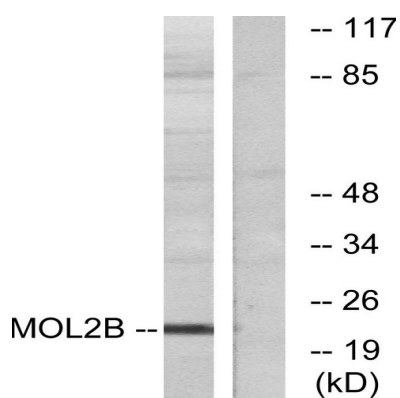
<b>Dilution Ratio</b>	WB 1:500 - 1:2000. IHC 1:100 - 1:300. ELISA: 1:5000..
<b>Molecular Weight</b>	23kD

## Background

The protein encoded by this gene shares similarity with the yeast Mob1 protein. Yeast Mob1 binds Mps1p, a protein kinase essential for spindle pole body duplication and mitotic checkpoint regulation. This gene is located on the opposite strand as the interferon kappa precursor (IFNK) gene. [provided by RefSeq, Jul 2008],function:May regulate the activity of kinases.,similarity:Belongs to the MOB1/phoecin family.,

## Research Area

## Image Data

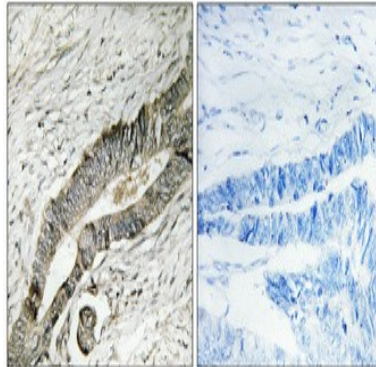


Western blot analysis of lysates from COLO cells, using MOBKL2B Antibody. The lane on the right is blocked with the synthesized peptide.



Western Blot analysis of various cells using Mob3B Polyclonal Antibody

**Product Name: Mob3B Rabbit Polyclonal Antibody**  
**Catalog #: APRab14016**



Immunohistochemical analysis of paraffin-embedded Human colon cancer. Antibody was diluted at 1:100 (4°, overnight) . High-pressure and temperature Tris-EDTA, pH 8.0 was used for antigen retrieval. Negative control (right) obtained from antibody was pre-absorbed by immunogen peptide.

**Note**

For research use only.