

Product Name: Mlx Rabbit Polyclonal Antibody
Catalog #: APRab13965



Summary

Production Name	Mlx Rabbit Polyclonal Antibody
Description	Rabbit Polyclonal Antibody
Host	Rabbit
Application	WB,IHC,ELISA
Reactivity	Human,Mouse,Rat

Performance

Conjugation	Unconjugated
Modification	Unmodified
Isotype	IgG
Clonality	Polyclonal
Form	Liquid
Storage	Store at 4°C short term. Aliquot and store at -20°C long term. Avoid freeze/thaw cycles.
Buffer	Liquid in PBS containing 50% glycerol, 0.5% BSA and 0.02% New type preservative N.
Purification	Affinity purification

Immunogen

Gene Name	MLX MLX; BHLHD13; TCFL4; Max-like protein X; Class D basic helix-loop-helix protein 13;
Alternative Names	bHLHd13; Max-like bHLHZip protein; Protein BigMax; Transcription factor-like protein 4
Gene ID	6945.0
SwissProt ID	Q9UH92.The antiserum was produced against synthesized peptide derived from human Mlx. AA range:111-160

Application

Dilution Ratio	WB 1:500 - 1:2000. IHC 1:100 - 1:300. ELISA: 1:10000..
Molecular Weight	33kD

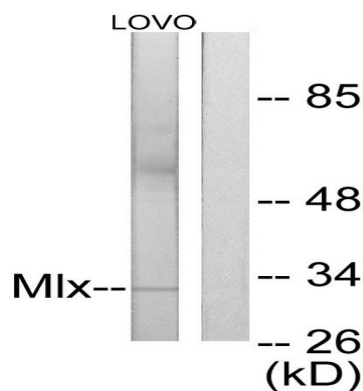
Background

The product of this gene belongs to the family of basic helix-loop-helix leucine zipper (bHLH-Zip) transcription factors. These factors form heterodimers with Mad proteins and play a role in proliferation, determination and differentiation. This gene product may act to diversify Mad family function by its restricted association with a subset of the Mad family of transcriptional repressors, namely, Mad1 and Mad4. Alternatively spliced transcript variants encoding different isoforms have been identified for this gene. [provided by RefSeq, Jul 2008],function:Transcription regulator. Forms a sequence-specific DNA-binding protein complex with MAD1, MAD4, MNT, WBSCR14 and MLXIP which recognizes the core sequence 5'-CACGTG-3'. The TCFL4-MAD1, TCFL4-MAD4, TCFL4-WBSCR14 complexes are transcriptional repressors. Plays a role in transcriptional activation of glycolytic target genes. Involved in glucose-responsive gene regulation.,similarity:Contains 1 basic helix-loop-helix (bHLH) domain.,subcellular location:Found predominantly in the cytoplasm.,subcellular location:Found predominantly in the nucleus.,subunit:Efficient DNA binding requires dimerization with another bHLH protein. Binds DNA as a heterodimer with MAD1, MAD4, MNT, WBSCR14 and MLXIP. Can also bind DNA as a homodimer.,tissue specificity:Expressed in all tissues tested, including spleen, thymus, prostate, ovary, intestine, colon, peripheral blood leukocyte, heart, liver, skeletal muscle and kidney. Lower levels of expression in testis, brain, placenta and lung.,

Research Area

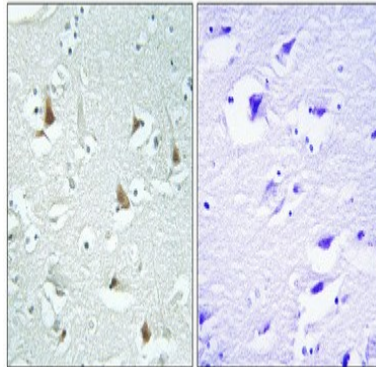
Stem cell pathway; Protein_Acetylation

Image Data



Western blot analysis of lysates from LOVO cells, using Mlx Antibody. The lane on the right is blocked with the synthesized peptide.

Product Name: Mlx Rabbit Polyclonal Antibody
Catalog #: APRab13965



Immunohistochemical analysis of paraffin-embedded Human brain. Antibody was diluted at 1:100 (4°,overnight) . High-pressure and temperature Tris-EDTA,pH8.0 was used for antigen retrieval. Negative contrl (right) obtaned from antibody was pre-absorbed by immunogen peptide.

Note

For research use only.