

Product Name: MLL2 Rabbit Polyclonal Antibody
Catalog #: APRab13960



Summary

Production Name	MLL2 Rabbit Polyclonal Antibody
Description	Rabbit Polyclonal Antibody
Host	Rabbit
Application	WB,ELISA
Reactivity	Human,Rat,Mouse

Performance

Conjugation	Unconjugated
Modification	Unmodified
Isotype	IgG
Clonality	Polyclonal
Form	Liquid
Storage	Store at 4°C short term. Aliquot and store at -20°C long term. Avoid freeze/thaw cycles.
Buffer	Liquid in PBS containing 50% glycerol, and 0.02% New type preservative N.
Purification	Affinity purification

Immunogen

Gene Name	MLL2 ALR KMT2D MLL4
Alternative Names	
Gene ID	8085.0
SwissProt ID	O14686.Synthesized peptide derived from human protein . at AA range: 1430-1510

Application

Dilution Ratio	IHC 1:50-300
Molecular Weight	609kD

Background

The protein encoded by this gene is a histone methyltransferase that methylates the Lys-4 position of histone H3. The encoded protein is part of a large protein complex called ASCOM, which has been shown to be a transcriptional regulator

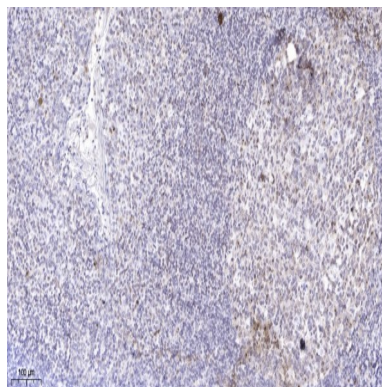
Product Name: MLL2 Rabbit Polyclonal Antibody
Catalog #: APRab13960



of the beta-globin and estrogen receptor genes. Mutations in this gene have been shown to be a cause of Kabuki syndrome. [provided by RefSeq, Oct 2010],catalytic activity:S-adenosyl-L-methionine + histone L-lysine = S-adenosyl-L-homocysteine + histone N(6)-methyl-L-lysine.,domain:LXXLL motifs 5 and 5 are essential for the association with ESR1 nuclear receptor.,function:Histone methyltransferase. Methylates 'Lys-4' of histone H3. H3 'Lys-4' methylation represents a specific tag for epigenetic transcriptional activation. Plays a central role in beta-globin locus transcription regulation by being recruited by NFE2. Acts as a coactivator for estrogen receptor by being recruited by ESR1, thereby activating transcription.,miscellaneous:This gene mapped to a chromosomal region involved in duplications and translocations associated with cancer.,PTM:Phosphorylated upon DNA damage, probably by ATM or ATR.,similarity:Belongs to the histone-lysine methyltransferase family. TRX/MLL subfamily.,similarity:Contains 1 post-SET domain.,similarity:Contains 1 RING-type zinc finger.,similarity:Contains 1 SET domain.,similarity:Contains 5 PHD-type zinc fingers.,subunit:Component of the MLL2/MLL3 complex (also named ASCOM complex), at least composed of MLL2, MLL3, ASH2L, RBBP5, DPY30, NCOA6, WDR5, MEN1, KDM6A and PAXIP1/PTIP. Interacts with NFE2. Interacts with ESR1; interaction is direct.,tissue specificity:Expressed in most adult tissues, including a variety of hematoipoietic cells, with the exception of the liver.,

Research Area

Image Data



Immunohistochemical analysis of paraffin-embedded human tonsil. 1, Antibody was diluted at 1:200 (4° overnight) . 2, Tris-EDTA,pH9.0 was used for antigen retrieval. 3,Secondary antibody was diluted at 1:200 (room temperature, 45min) .

Note

For research use only.