

Product Name: MLK4 Rabbit Polyclonal Antibody
Catalog #: APRab13956



Summary

Production Name	MLK4 Rabbit Polyclonal Antibody
Description	Rabbit Polyclonal Antibody
Host	Rabbit
Application	WB,ELISA
Reactivity	Human,Rat,Mouse

Performance

Conjugation	Unconjugated
Modification	Unmodified
Isotype	IgG
Clonality	Polyclonal
Form	Liquid
Storage	Store at 4°C short term. Aliquot and store at -20°C long term. Avoid freeze/thaw cycles.
Buffer	Liquid in PBS containing 50% glycerol, 0.5% BSA and 0.02% New type preservative N.
Purification	Affinity purification

Immunogen

Gene Name	MLK4
Alternative Names	MLK4; KIAA1804; Mitogen-activated protein kinase kinase kinase MLK4; Mixed lineage kinase 4
Gene ID	84451.0
SwissProt ID	Q5TCX8.The antiserum was produced against synthesized peptide derived from human MAP3KL4. AA range:631-680

Application

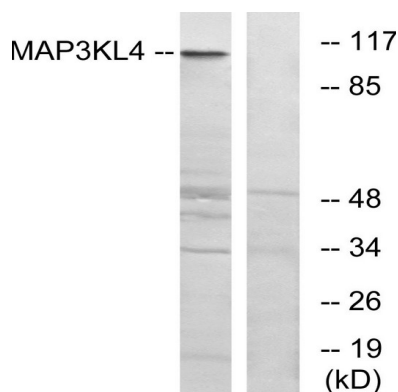
Dilution Ratio	WB 1:500-2000 ELISA 2000-20000
Molecular Weight	110kD

Background

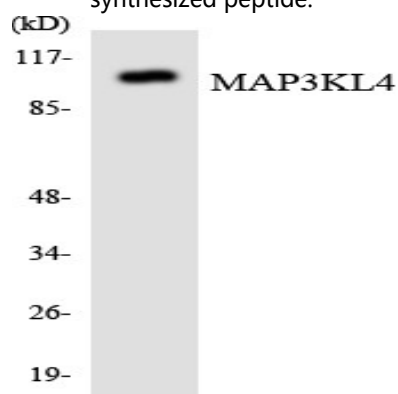
catalytic activity:ATP + a protein = ADP + a phosphoprotein.,cofactor:Magnesium.,enzyme regulation:Homodimerization via the leucine zipper domains is required for autophosphorylation and subsequent activation.,function:Activates the JUN N-terminal pathway.,PTM:Autophosphorylation on serine and threonine residues within the activation loop plays a role in enzyme activation.,similarity:Belongs to the protein kinase superfamily. STE Ser/Thr protein kinase family. MAP kinase kinase kinase subfamily.,similarity:Contains 1 protein kinase domain.,similarity:Contains 1 SH3 domain.,subunit:Homodimer.,catalytic activity:ATP + a protein = ADP + a phosphoprotein.,cofactor:Magnesium.,enzyme regulation:Homodimerization via the leucine zipper domains is required for autophosphorylation and subsequent activation.,function:Activates the JUN N-terminal pathway.,PTM:Autophosphorylation on serine and threonine residues within the activation loop plays a role in enzyme activation.,similarity:Belongs to the protein kinase superfamily. STE Ser/Thr protein kinase family. MAP kinase kinase kinase subfamily.,similarity:Contains 1 protein kinase domain.,similarity:Contains 1 SH3 domain.,subunit:Homodimer.,

Research Area

Image Data



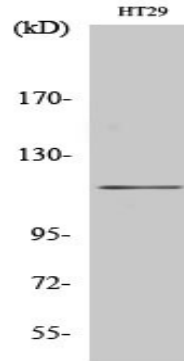
Western blot analysis of lysates from HT-29 cells, using MAP3KL4 Antibody. The lane on the right is blocked with the synthesized peptide.



Product Name: MLK4 Rabbit Polyclonal Antibody
Catalog #: APRab13956



Western blot analysis of the lysates from HepG2 cells using MAP3KL4 antibody.



Western Blot analysis of various cells using MLK4 Polyclonal Antibody

Note

For research use only.