

Summary

Production Name	MIP-1 β Rabbit Polyclonal Antibody
Description	Rabbit Polyclonal Antibody
Host	Rabbit
Application	WB
Reactivity	Human,Rat,Mouse

Performance

Conjugation	Unconjugated
Modification	Unmodified
Isotype	IgG
Clonality	Polyclonal
Form	Liquid
Storage	Store at 4°C short term. Aliquot and store at -20°C long term. Avoid freeze/thaw cycles.
Buffer	Liquid in PBS containing 50% glycerol, 0.5% BSA and 0.02% New type preservative N.
Purification	Affinity purification

Immunogen

Gene Name	CCL4 CCL4; LAG1; MIP1B; SCYA4; C-C motif chemokine 4; G-26 T-lymphocyte-secreted protein; HC21; Lymphocyte activation gene 1 protein; LAG-1; MIP-1-beta(1-69); Macrophage inflammatory protein 1-beta; MIP-1-beta; PAT 744; Protein H400; SIS-gamma; Small-inducible cytokine A4; T-cell activation protein 2; ACT-2
Alternative Names	
Gene ID	388372.0
SwissProt ID	P13236.The antiserum was produced against synthesized peptide derived from the Internal region of human CCL4. AA range:41-90

Application

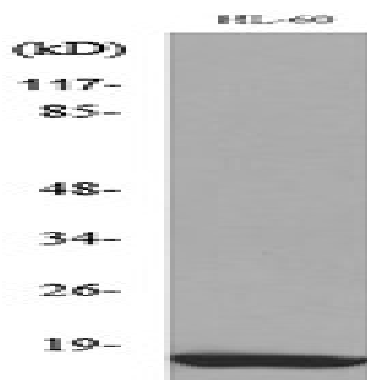
Dilution Ratio	WB 1:500-2000
Molecular Weight	16kD

Background

The protein encoded by this gene is a mitogen-inducible monokine and is one of the major HIV-suppressive factors produced by CD8+ T-cells. The encoded protein is secreted and has chemokinetic and inflammatory functions. [provided by RefSeq, Dec 2012],alternative products:CCL4L1 and CCL4L2 genes differ in their non-coding regions. Thus, alternative splicing events differ between the two genes,caution:Was originally (PubMed:9521068) thought to be a ligand for CCR8.,function:Chemokine that induces chemotaxis of cells expressing CCR5 or CCR1. Inhibits HIV replication in peripheral blood monocytes that express CCR5.,function:Monokine with inflammatory and chemokinetic properties. Binds to CCR5. One of the major HIV-suppressive factors produced by CD8+ T-cells. Recombinant MIP-1-beta induces a dose-dependent inhibition of different strains of HIV-1, HIV-2, and simian immunodeficiency virus (SIV). The processed form MIP-1-beta(3-69) retains the abilities to induce down-modulation of surface expression of the chemokine receptor CCR5 and to inhibit the CCR5-mediated entry of HIV-1 in T-cells. MIP-1-beta(3-69) is also a ligand for CCR1 and CCR2 isoform B.,induction:By mitogens.,online information:Macrophage inflammatory protein entry,polymorphism:The copy number of the CC4L1 gene varies among individuals; most individuals have 1 to 6 copies in the diploid genome.,PTM:N-terminal processed form MIP-1-beta(3-69) is produced by proteolytic cleavage after secretion from peripheral blood lymphocytes.,similarity:Belongs to the intercrine beta (chemokine CC) family.,subunit:Homodimer and heterodimer of MIP-1-alpha(4-69) and MIP-1-beta(3-69).,subunit:Interacts with CCR5.,tissue specificity:Detected in B-cells.,

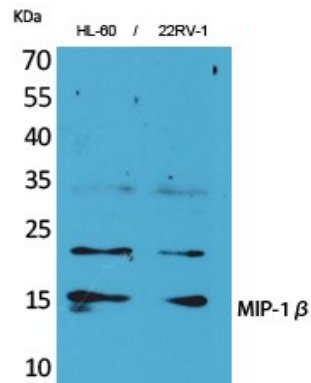
Research Area

Image Data



Western blot analysis of lysate from HL-60 cells, using CCL4 Antibody.

Product Name: MIP-1 β Rabbit Polyclonal Antibody
Catalog #: APRab13909



Western Blot analysis of HL-60, 22RV-1 cells using MIP-1 β Polyclonal Antibody.. Secondary antibody was diluted at 1:20000

Note

For research use only.