

**Product Name: MIB1 Rabbit Polyclonal Antibody**  
**Catalog #: APRab13886**



## Summary

<b>Production Name</b>	MIB1 Rabbit Polyclonal Antibody
<b>Description</b>	Rabbit Polyclonal Antibody
<b>Host</b>	Rabbit
<b>Application</b>	WB,IHC,IF,ELISA
<b>Reactivity</b>	Human,Mouse,Rat

## Performance

<b>Conjugation</b>	Unconjugated
<b>Modification</b>	Unmodified
<b>Isotype</b>	IgG
<b>Clonality</b>	Polyclonal
<b>Form</b>	Liquid
<b>Storage</b>	Store at 4°C short term. Aliquot and store at -20°C long term. Avoid freeze/thaw cycles.
<b>Buffer</b>	Liquid in PBS containing 50% glycerol, 0.5% BSA and 0.02% New type preservative N.
<b>Purification</b>	Affinity purification

## Immunogen

<b>Gene Name</b>	MIB1 DIP1 KIAA1323 ZZANK2
<b>Alternative Names</b>	MIB1 DIP1 KIAA1323 ZZANK2
<b>Gene ID</b>	57534.0
<b>SwissProt ID</b>	Q86YT6.Synthetic peptide from human protein at AA range: 901-950

## Application

<b>Dilution Ratio</b>	IHC-p: 100-300.WB 1:500-2000, ELISA 1:10000-20000. IF 1:50-200
<b>Molecular Weight</b>	130kD

## Background

This gene encodes a protein containing multiple ankyrin repeats and RING finger domains that functions as an E3 ubiquitin

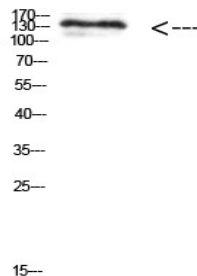
**Product Name: MIB1 Rabbit Polyclonal Antibody**  
**Catalog #: APRab13886**



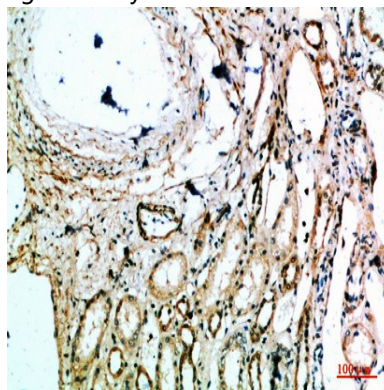
ligase. The encoded protein positively regulates Notch signaling by ubiquitinating the Notch receptors, thereby facilitating their endocytosis. This protein may also promote the ubiquitination and degradation of death-associated protein kinase 1 (DAPK1). [provided by RefSeq, Jun 2013],function:E3 ubiquitin-protein ligase that mediates ubiquitination of Delta receptors, which act as ligands of Notch proteins. Positively regulates the Delta-mediated Notch signaling by ubiquitinating the intracellular domain of Delta, leading to endocytosis of Delta receptors. Probably mediates ubiquitination and subsequent proteasomal degradation of DAPK1, thereby antagonizing anti-apoptotic effects of DAPK1 to promote TNF-induced apoptosis.,miscellaneous:In epilepsy brain tissue, levels of expression are increased in the cytoplasm and microsomal fractions (endoplasmic reticulum),.pathway:Protein modification; protein ubiquitination.,PTM:Ubiquitinated. Possibly via autoubiquitination.,similarity:Contains 1 ZZ-type zinc finger.,similarity:Contains 2 MIB/HERC2 domains.,similarity:Contains 3 RING-type zinc fingers.,similarity:Contains 9 ANK repeats.,subcellular location:Localizes to the plasma membrane (By similarity). According to PubMed:15048887, it is mitochondrial, however such localization remains unclear.,tissue specificity:Widely expressed at low level. Expressed at higher level in spinal cord, ovary, whole brain, and all specific brain regions examined.,

## Research Area

## Image Data



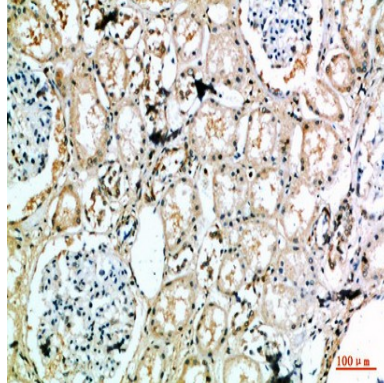
Western Blot analysis of 293t cells using Antibody diluted at 1000. Secondary antibody was diluted at 1:20000



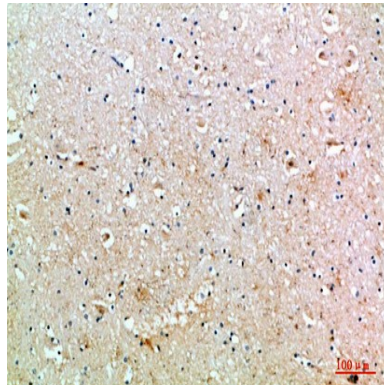
**Product Name: MIB1 Rabbit Polyclonal Antibody**  
**Catalog #: APRab13886**



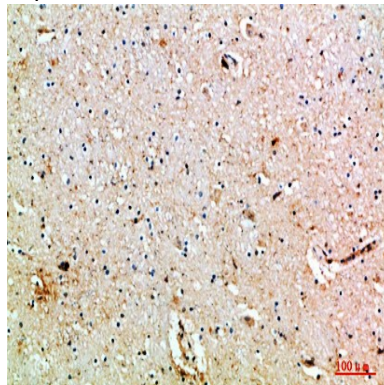
Immunohistochemical analysis of paraffin-embedded human-kidney, antibody was diluted at 1:200



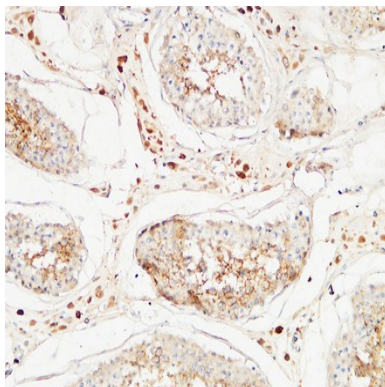
Immunohistochemical analysis of paraffin-embedded human-kidney, antibody was diluted at 1:200



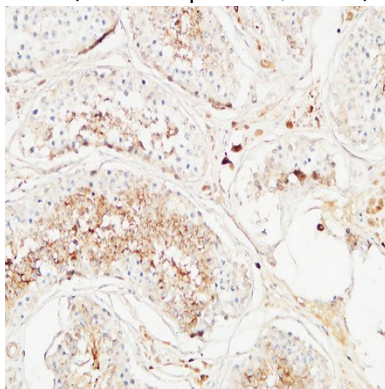
Immunohistochemical analysis of paraffin-embedded human-brain, antibody was diluted at 1:200



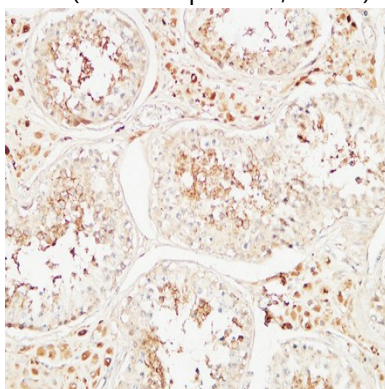
Immunohistochemical analysis of paraffin-embedded human-brain, antibody was diluted at 1:200



Immunohistochemical analysis of paraffin-embedded Human testis. 1, Antibody was diluted at 1:200 (4°,overnight) . 2, High-pressure and temperature EDTA, pH8.0 was used for antigen retrieval. 3,Secondary antibody was diluted at 1:200 (room temperature, 30min) .

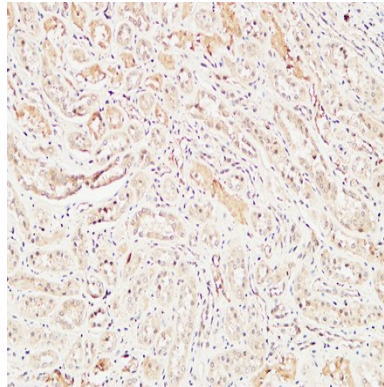


Immunohistochemical analysis of paraffin-embedded Human testis. 1, Antibody was diluted at 1:200 (4°,overnight) . 2, High-pressure and temperature EDTA, pH8.0 was used for antigen retrieval. 3,Secondary antibody was diluted at 1:200 (room temperature, 30min) .



Immunohistochemical analysis of paraffin-embedded Human testis. 1, Antibody was diluted at 1:200 (4°,overnight) . 2, High-pressure and temperature EDTA, pH8.0 was used for antigen retrieval. 3,Secondary antibody was diluted at 1:200 (room temperature, 30min) .

**Product Name: MIB1 Rabbit Polyclonal Antibody**  
**Catalog #: APRab13886**



Immunohistochemical analysis of paraffin-embedded Human kidney. 1, Antibody was diluted at 1:200 (4°, overnight) . 2, High-pressure and temperature EDTA, pH8.0 was used for antigen retrieval. 3, Secondary antibody was diluted at 1:200 (room temperature, 30min) .

**Note**

For research use only.